

# MONA OFFSHORE WIND PROJECT

## Landscape and Seascape Character in Wales – assessment of effects from the Mona Array Area

Deadline: 4

Reference Number: EN010137

Document Reference: S\_D4\_57

Document Number: MOCNS-J3303-RPS-10409

4 November 2024

F01



Image of an offshore wind farm

**MONA OFFSHORE WIND PROJECT**

**Document status**

<b>Version</b>	<b>Purpose of document</b>	<b>Authored by</b>	<b>Reviewed by</b>	<b>Approved by</b>	<b>Review date</b>
F01	Submission at D4	RPS	Mona Offshore Wind Ltd	Mona Offshore Wind Ltd	4 Nov 2024

**Prepared by:**

**RPS**

**Prepared for:**

**Mona Offshore Wind Ltd.**

## MONA OFFSHORE WIND PROJECT

### Contents

<b>1</b>	<b>LANDSCAPE AND SEASCAPE CHARACTER IN WALES – ASSESSMENT OF EFFECTS FROM THE MONA ARRAY AREA</b> .....	<b>1</b>
1.1	Introduction.....	1
1.2	Response.....	1
1.2.2	Assessment.....	3
1.2.3	Summary and conclusions.....	64
1.2.4	References.....	64

### Tables

Table 1.1:	Landscape Character Baseline – Mona Offshore Wind Project.....	1
Table 1.2:	Landscape Character Baseline in Isle of Anglesey NL – Initial assessment of effects from the Mona Array Area.....	4
Table 1.3:	Landscape Character Baseline in Eryri NP – Initial assessment of effects from the Mona Array Area.....	5
Table 1.4:	Landscape Character Baseline in Clwydian Range and Dee Valley NL – Initial assessment of effects from the Mona Array Area.....	5
Table 1.5:	Landscape Character Baseline in Gwynedd – Initial assessment of effects from the Mona Array Area.....	6
Table 1.6:	Landscape Character Baseline in Conwy and Denbighshire – Initial assessment of effects from the Mona Array Area.....	6
Table 1.7:	Seascape Character Baseline in Anglesey – Initial assessment of effects from the Mona Array Area.....	7
Table 1.8:	Assessment of effects on LCAs and LCTs within nationally designated landscapes resulting from the Mona Array Area.....	15
Table 1.9:	Key Characteristics of LCA 1 Northern Uplands (Ucheldir y Gogledd) Eryri NP – Effects of Mona Array Area.....	28
Table 1.10:	Assessment of effects on LCAs and LCTs outside nationally designated landscapes resulting from the Mona Array Area.....	32
Table 1.11:	Assessment of effects on Anglesey SCAs resulting from the Mona Array Area.....	52

### Figures

Figure 1.1:	Mona Offshore Wind Project and Baseline Landscape and Seascape Character in Wales (sheet 1 of 5).....	9
Figure 1.2:	Mona Offshore Wind Project and Baseline Landscape and Seascape Character in Wales (sheet 2 of 5).....	10
Figure 1.3:	Mona Offshore Wind Project and Baseline Landscape and Seascape Character in Wales (sheet 3 of 5).....	11
Figure 1.4:	Mona Offshore Wind Project and Baseline Landscape and Seascape Character in Wales (sheet 4 of 5).....	12
Figure 1.5:	Mona Offshore Wind Project and Baseline Landscape and Seascape Character in Wales (sheet 5 of 5).....	13

## MONA OFFSHORE WIND PROJECT

### Glossary

Term	Meaning
<b>Terminology</b>	
Mona Offshore Wind Project	The Mona Offshore Wind Project is comprised of both the generation assets and offshore and onshore transmission assets and associated activities.
Mona Array Area	The area within which the wind turbines, foundations, inter-array cables, interconnector cables, offshore export cables and offshore substation platforms (OSPs) forming part of the Mona Offshore Wind Project will be located.
Wind turbines	The wind turbine generators, including the tower, nacelle and rotor.
Environmental Statement	The document presenting the results of the Environmental Impact Assessment (EIA) process for the Mona Offshore Wind Project.

### Acronyms

Acronym	Description
AONB	Area of Outstanding Natural Beauty (now National Landscape)
GLVIA3	Guidelines for Landscape and Visual Impact Assessment Third edition
ISH	Issue Specific Hearing
LCA	Landscape Character Area
LCT	Landscape Character Type
NL	National Landscape (formerly AONB)
NLCA	National Landscape Character Assessment
NP	National Park
NRW (A)	Natural Resources Wales (Advisory)
OESEA	Offshore Energy Strategic Environmental Assessment
SCA	Seascape Character Area
SLA	Special Landscape Area
SLVIA	Seascape, Landscape and Visual Impact Assessment
SSZ	Seascape Sensitivity Zone
WHS	World Heritage Site
ZTV	Zone of Theoretical Visibility

### Units

Unit	Description
%	Percentage
km	kilometres



# 1 Landscape and Seascape Character in Wales – assessment of effects from the Mona Array Area

## 1.1 Introduction

1.1.1.1 This document has been prepared in response to Action Point 22 arising from the Issue Specific Hearing 3 (ISH3) "Environmental Matters" which was held on 16 October 2024 in respect of the Mona Offshore Wind Project.

1.1.1.2 Action Point 22 is set out in the Issue Specific Hearing Note 3 (EV5-006) and requires the Applicant to:

*"Provide a local landscape character assessment undertaken for Eryri National Park."*

1.1.1.3 A meeting was held with Natural Resources Wales Advisory (NRW (A)) on 8 October. Within this meeting, the Applicant agreed to provide an assessment of the potential effects of the Mona Array Area on the local landscape and seascape character areas to 60 km from the Mona Array Area within the Nationally Designated landscapes, including Isle of Anglesey National Landscape (NL), Eryri National Park (NP) and Clwydian Range and Dee Valley NL. In addition, and for completeness, the Applicant has also considered Landscape Character Areas (LCAs) within 50 km from the Mona Array Area, outside these nationally designated areas.

1.1.1.4 This note addresses both the ISH3 Hearing Action Point 22 and the action taken during the meeting with NRW (A) on 8 October 2024.

1.1.1.5 This report focusses on the effects that would be experienced by the landscape and seascape character areas during the operations and maintenance phase, as this is the phase of the Mona Offshore Wind Project that is the most likely to result in significant effects.

## 1.2 Response

1.2.1.1 This seascape, landscape and visual impact assessment (SLVIA) technical report provides an assessment of the effects of the offshore components of the Mona Offshore Wind Project on local landscape and seascape character areas in Wales. The baseline considered in this assessment is detailed in Table 1.1 below.

**Table 1.1: Landscape Character Baseline – Mona Offshore Wind Project.**

Region	Published landscape/seascape character baseline
Isle of Anglesey NL	Anglesey Landscape Strategy Update (Isle of Anglesey County Council, 2011)
Eryri NP	Supplementary Planning Guidance: Landscapes and Seascapes of Eryri (Snowdonia National Park Authority (2014)
Clwydian Range and Dee Valley NL	Supplementary Planning Guidance Note (Clwydian Range and Dee Valley NL, 2018)
Gwynedd	Supplementary Planning Guidance (2009): Landscape Character (Cyngor Gwynedd Council, 2009)
Conwy and Denbighshire	Supplementary Planning Guidance: LDP11: Landscape Sensitivity and Capacity Assessment for Onshore Wind Turbine Development (Conwy Borough Council, 2014)

**MONA OFFSHORE WIND PROJECT**

Region	Published landscape/seascape character baseline
Isle of Anglesey Seascape	Anglesey Seascape Character Assessment (Fiona Fyfe Associates, 2013)

1.2.1.2 Volume 2, Chapter 8: Seascape and visual resources, paragraphs 8.8.2.48 *et seq* (APP-060) concluded that there were no significant effects on national landscape character areas (NLCAs) as summarised below:

- NLCA 01 Afordir Môn/Anglesey Coast where a negligible to small magnitude of impact would be experienced by this landscape of medium to high sensitivity resulting in minor adverse effects, which are not significant (APP-060, paragraph 8.8.2.60)
- NLCA 08 Arfordir Gogledd Cymru/North Wales Coast where a negligible magnitude of impact would arise to this landscape of low to medium sensitivity resulting in negligible adverse effects which are not significant (APP-060, paragraph 8.8.2.61).

1.2.1.3 Regarding Seascape Sensitivity Zones (SSZs) within Wales, Volume 2, Chapter 8: Seascape and visual resources, paragraphs 8.8.2.11 *et seq* (APP-060) concluded no significant effects on these receptors as outlined below, although it is noted that significant effects would potentially arise in close proximity to the Mona Array Area.

- SSZ 2 North East Wales Offshore where a medium magnitude of impact would arise to this seascape overall of low to medium sensitivity resulting in moderate to major adverse effects, in the parts of the SSZ occupied by the Mona Array Area, which are significant (Volume 2, Chapter 8: Seascape and visual resources (APP-060), paragraph 8.8.2.39). The remainder of the SSZ would experience minor to moderate adverse effects. The overall effect on SSZ 2 would be minor to moderate adverse and not significant (Volume 2, Chapter 8: Seascape and visual resources (APP-060), paragraph 8.8.2.40)
- SSZ 4 North Wales and North Anglesey Offshore where a small magnitude of impact would arise to this seascape overall of medium sensitivity resulting in a minor adverse and not significant effect (Volume 2, Chapter 8: Seascape and visual resources (APP-060), paragraph 8.8.2.41)
- SSZ 5 North Wales and Anglesey Outer Offshore where a small magnitude of impact would arise to this seascape overall of low to medium sensitivity resulting in a moderate to major adverse effects, in the parts of the SSZ occupied by the Mona Array Area, which are significant (Volume 2, Chapter 8: Seascape and visual resources (APP-060), paragraph 8.8.2.39). The remainder of the SSZ would experience minor to moderate adverse effects. The overall effect on SSZ 5 would be minor adverse and not significant (Volume 2, Chapter 8: Seascape and visual resources (APP-060), paragraph 8.8.2.40).

1.2.1.4 This report provides an assessment on the effects on the baseline of the local landscape and seascape character of Wales. The assessment covers landscape character in the nationally designated landscapes (NLs and NP) within a 60 km radius from the Mona Array Area and landscape character outside the nationally designated landscapes within a 50 km radius from the Mona Array Area. The study areas are the same as those documented in Volume 2 Chapter 8: Seascape and visual resources (APP-060) and Volume 6, Annex 8.5: International and nationally designated

landscapes study (APP-105). This report also considers effects on seascape character associated with the Isle of Anglesey within a 60 km radius from the Mona Array Area.

## 1.2.2 Assessment

### Overview

1.2.2.1 The assessment of effects of the Mona Array Area on landscape and seascape character was undertaken in accordance with the methodology documented in Volume 6, Annex 8.4: Seascape, landscape and Visual Resources Impact Assessment Methodology (APP- 104).

### Initial Assessment

1.2.2.2 The LCAs and landscape character types (LCTs) in the nationally designated landscapes referenced below in section 1.2 (shown in Figure 1.1 to Figure 1.5) within the 60 km SLVIA Study Area were analysed with reference to the Zone of Theoretical Visibility (ZTV) for the Mona Array Area. Each LCA and LCT was considered in terms of the extent of the theoretical effects of the Mona Array Area, expressed as a percentage of the land area highlighted by the ZTV. This data is presented in Table 1.2, Table 1.3 and Table 1.4 below, together with distance to the Mona Array Area in kilometres (km) and an initial assessment of effects.

1.2.2.3 Similarly, the baseline landscape character in the 50 km SLVIA Study Area outside of the national designations (shown in Figure 1.1 to Figure 1.5) was also analysed and the data is presented in Table 1.5 and Table 1.6 below.

1.2.2.4 The baseline seascape character of the Isle of Anglesey (shown in Figure 1.1) was also analysed with reference to a 60 km SLVIA Study Area and the data is presented in Table 1.7.

1.2.2.5 The initial assessment (see Table 1.2, Table 1.3, Table 1.4, Table 1.5 and Table 1.6) indicates that effects from the Mona Array Area would not be significant for a number of the baseline LCAs and LCTs due to distance and / or the limited extent of effects as indicated in the ZTV. Those LCAs and LCTs beyond 50 km of the Mona Array Area were screened out of the assessment. Similarly, those LCAs and LCTs with under 10% coverage of the ZTV were screened out of the assessment. The remaining LCAs and LCTs were taken through to the detailed assessment in the section entitled 'Detailed Assessment' below.

1.2.2.6 Regarding seascape character, the initial assessment (see Table 1.7) indicates effects over the majority of Seascape Character Areas (SCAs) where they lie off the north coast of Anglesey. The SCAs comprise areas of sea, coastline and land. Effects will be more limited/non-existent for SCAs along the west and south coast of the Isle of Anglesey. Using the same screening criteria as for the LCAs and LCTs (paragraph 1.2.2.5, above) the initial assessment in Table 1.7 indicates that effects from the Mona Array Area would not be significant for a number of the baseline SCAs due to distance and / or the limited extent of effects as indicated in the ZTV.

**MONA OFFSHORE WIND PROJECT**

**Table 1.2: Landscape Character Baseline in Isle of Anglesey NL – Initial assessment of effects from the Mona Array Area.**

<b>Anglesey Landscape Strategy Update 2011 – landscape Character Area (LCA)</b>	<b>% of land area highlighted on tip height ZTV 60 km</b>	<b>Distance to Mona Array Area (km)</b>	<b>Initial assessment</b>
Landscape Character Area 1. Holyhead Mountain	31	54	Not significant based on distance.
Landscape Character Area 2. Holy Island	9	51	Not significant based on distance and limited extent highlighted in ZTV
Landscape Character Area 3. Inland Sea	1	49	Not significant based on limited extent highlighted in ZTV.
Landscape Character Area 4. North West Coast	47	31	Further detailed assessment - refer Table 1.8 below.
Landscape Character Area 5. North West Anglesey	24	32	Further detailed assessment - refer Table 1.8 below.
Landscape Character Area 6. Amlwch and Environs	74	29	Further detailed assessment - refer Table 1.8 below.
Landscape Character Area 7. Parys Mountain	49	32	Further detailed assessment - refer Table 1.8 below.
Landscape Character Area 8. Dulas Bay Hinterland	62	31	Further detailed assessment - refer Table 1.8 below.
Landscape Character Area 9. Red Wharf Bay	69	33	Further detailed assessment - refer Table 1.8 below.
Landscape Character Area 10. Penmon and Puffin Island	79	34	Further detailed assessment - refer Table 1.8 below.
Landscape Character Area 11. Eastern Menai Strait	7	36	Not significant based on limited extent highlighted in ZTV.
Landscape Character Area 12. East Central Anglesey	17	37	Further detailed assessment - refer Table 1.8 below.
Landscape Character Area 13. Western Menai Strait	0	47	No effect, as highlighted in ZTV.
Landscape Character Area 14. Newborough	2	54	Not significant based on distance and limited extent highlighted in ZTV.
Landscape Character Area 15. Afon Cafni	0	45	No effect, as highlighted in ZTV.
Landscape Character Area 16. Aberffraw	4	52	Not significant based on distance and limited extent highlighted in ZTV.
Landscape Character Area 17. West Central Anglesey	23	38	Further detailed assessment - refer Table 1.8 below.
Landscape Character Area 18. Valley Airfield Environs	0	51	No effect, as highlighted in ZTV.

**MONA OFFSHORE WIND PROJECT**

**Table 1.3: Landscape Character Baseline in Eryri NP – Initial assessment of effects from the Mona Array Area.**

<b>Supplementary Planning Guidance: Landscapes and Seascapes of Eryri</b>	<b>% of land area highlighted on tip height ZTV 60 km</b>	<b>Distance to Mona Array Area (km)</b>	<b>Initial assessment</b>
Landscape Character Area 1 Northern Uplands (Ucheldir y Gogledd)	37	36	Further detailed assessment - refer Table 1.8 below.
Landscape Character Area 2 Carneddau Range (Y Carneddau)	6	49	Not significant based on limited extent highlighted in ZTV.
Landscape Character Area 3 Snowdon Massif (Yr Wyddfa a'r Glyderau)	8	52	Not significant based on distance and limited extent highlighted in ZTV.
Landscape Character Area 5 Afon Glaslyn & Ysgafell Wen (Y Moelwynion)	0	57	No effect, as highlighted in ZTV.
Landscape Character Area 6 Gwydyr Forest (Coedwig Gwydyr)	4	51	Not significant based on distance and limited extent highlighted in ZTV.
Landscape Character Area 7 Vale of Conwy (Dyffryn Conwy)	6	54	Not significant based on distance and limited extent highlighted in ZTV.

**Table 1.4: Landscape Character Baseline in Clwydian Range and Dee Valley NL – Initial assessment of effects from the Mona Array Area.**

<b>Clwydian Range and Dee Valley NL Landscape Types</b>	<b>% of land area highlighted on tip height ZTV 60 km</b>	<b>Distance to Mona Array Area (km)</b>	<b>Initial assessment</b>
Built Environment	3	41	Not significant based on limited extent highlighted in ZTV.
Upland Areas	29.6	50	Not significant based on distance.
Lowland Areas	21	41	Further detailed assessment - refer Table 1.8 below.
Rolling Lowland	44	41	Further detailed assessment - refer Table 1.8 below.
River Valleys	0	43	No effect, as highlighted in ZTV.
Hill Slopes	8	41	Not significant based on limited extent highlighted in ZTV.

**MONA OFFSHORE WIND PROJECT**
**Table 1.5: Landscape Character Baseline in Gwynedd – Initial assessment of effects from the Mona Array Area.**

Gwynedd landscape character	% of land area highlighted on tip height ZTV 50 km	Distance to Mona Array Area (km)	Initial assessment
1 Bangor Coastal Plain	68	41	Further detailed assessment - refer Table 1.10 below
2 Penisarwaun Plateau	56	48	Further detailed assessment - refer Table 1.10 below
3 Llanberis - Bethesda	42	47	Further detailed assessment - refer Table 1.10 below
4 Caernarfon - Coast and Plateau	12	49	Not significant based on limited extent highlighted in ZTV
16 Menai Coast	2	44	Not significant based on limited extent highlighted in ZTV

**Table 1.6: Landscape Character Baseline in Conwy and Denbighshire – Initial assessment of effects from the Mona Array Area.**

Conwy and Denbighshire landscape character	% of land area highlighted on tip height ZTV 50 km	Distance to Mona Array Area (km)	Initial assessment
<b>Lowland Areas</b>			
A1 Eastern Lowlands	93	44	Further detailed assessment - refer Table 1.10 below.
A2 Coastal	93	41	Further detailed assessment - refer Table 1.10 below.
A3 Lowland Hills	33	36	Further detailed assessment - refer Table 1.10 below.
A4 Coastal and Estuarine Flats (Prestatyn to Abergele)	98	38	Further detailed assessment - refer Table 1.10 below.
A5 Coastal and Estuarine Flats (Colwyn Bay)	83	33	Further detailed assessment - refer Table 1.10 below.
A6 Vale Farmlands (Vale of Clwyd)	43	39	Further detailed assessment - refer Table 1.10 below.
A8 Coastal Landscape Unit (Penmaenmawr to Llanfairfechan)	81	38	Further detailed assessment - refer Table 1.10 below.
<b>Lower Hills and Valleys</b>			
B2 Deep Valleys (Aled and Elwy)	1	43	Not significant based on limited extent – highlighted in ZTV.
B7 Conwy Valley	25	35	Further detailed assessment - refer Table 1.10 below.



## MONA OFFSHORE WIND PROJECT

Conwy and Denbighshire landscape character	% of land area highlighted on tip height ZTV 50 km	Distance to Mona Array Area (km)	Initial assessment
<b>Limestone Country</b>			
C1 Trelawnyd Plateau	44	41	Further detailed assessment - refer Table 1.10 below.
C4 Limestone Farmlands (Abergele to Denbigh Coastal/ Vale Hills)	57	36	Further detailed assessment - refer Table 1.10 below.
C5 Limestone Farmlands (Northern Clwydian Range)	53	44	Further detailed assessment - refer Table 1.10 below.
C8 Limestone Escarpment and Hills (Prestatyn - Dyserth Hillside)	94	42	Further detailed assessment - refer Table 1.10 below.
C9 Limestone Escarpment and Hills	70	34	Further detailed assessment - refer Table 1.10 below.
C10 Great Orme and Creuddyn Peninsular	39	30	Further detailed assessment - refer Table 1.10 below.
<b>Marginal Upland</b>			
D1 Aled Hiraethog Hills (West)	22	35	Further detailed assessment - refer Table 1.10 below.
D8 Upland Plateau	26	39	Further detailed assessment - refer Table 1.10 below.
D16 Marginal Upland (East Conwy Valley)	45	40	Further detailed assessment - refer Table 1.10 below.

**Table 1.7: Seascape Character Baseline in Anglesey – Initial assessment of effects from the Mona Array Area.**

Seascape Character Area (SCA)	% of land area highlighted on tip height ZTV 60 km	Distance to Mona Array Area (km)	Initial assessment
1 Conwy Estuary	3	36	Not significant based on limited extent highlighted in ZTV.
2 Conwy Bay	80	30	Further detailed assessment - refer Table 1.11 below.
3 Traeth Lafan	83	33	Further detailed assessment - refer Table 1.11 below.
4 Menai Strait	16	42	Further detailed assessment - refer Table 1.11 below.
5 Penmon	94	33	Further detailed assessment - refer Table 1.11 below.
6 Red Wharf Bay to Moelfre	97	28	Further detailed assessment - refer Table 1.11 below.

**MONA OFFSHORE WIND PROJECT**

<b>Seascape Character Area (SCA)</b>	<b>% of land area highlighted on tip height ZTV 60 km</b>	<b>Distance to Mona Array Area (km)</b>	<b>Initial assessment</b>
7 Dulas Bay	88	28	Further detailed assessment - refer Table 1.11 below.
8 Amlwch and Cemaes	82	28	Further detailed assessment - refer Table 1.11 below.
9 Cemlyn Bay	91	36	Further detailed assessment - refer Table 1.11 below.
10 Carmel Head to Penrhyn	37	41	Further detailed assessment - refer Table 1.11 below.
11 Holyhead	0	47	No effect, as highlighted in ZTV.
12 Inland Sea	0	52	No effect, as highlighted in ZTV.
13 Holyhead Mountain	17	51	Not significant based on distance.
14 Rhoscolyn	8	52	Not significant based on distance and limited extent highlighted in ZTV.
15 Rhosneigr	0	53	No effect, as highlighted in ZTV.
16 Malltraeth	4	46	Not significant based on limited extent highlighted in ZTV.
17 Caernarfon	1	53	Not significant based on distance and limited extent highlighted in ZTV.
18 Abermenai	0	57	No effect, as highlighted in ZTV.
28 North-east of Anglesey	100	7	Further detailed assessment - refer Table 1.11 below.
29 North of Anglesey	100	20	Further detailed assessment - refer Table 1.11 below.
30 North-west of Anglesey	100	39	Further detailed assessment - refer Table 1.11 below.
31 West of Anglesey	17	51	Not significant based on distance.
32 Caernafon Bay	0	55	No effect, as highlighted in ZTV.

MONA OFFSHORE WIND PROJECT

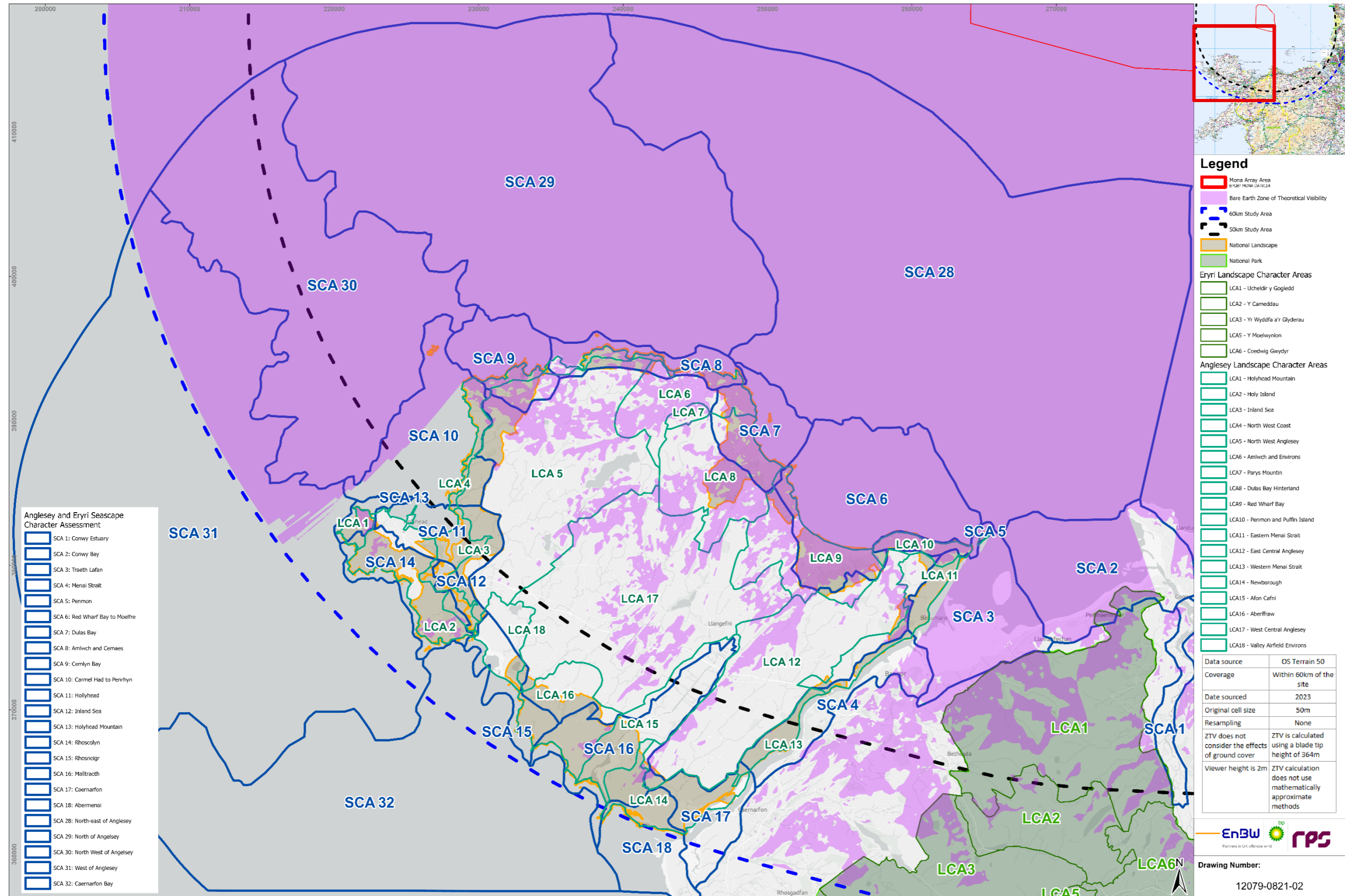


Figure 1.1: Mona Offshore Wind Project and Baseline Landscape and Seascape Character in Wales (sheet 1 of 5).



MONA OFFSHORE WIND PROJECT

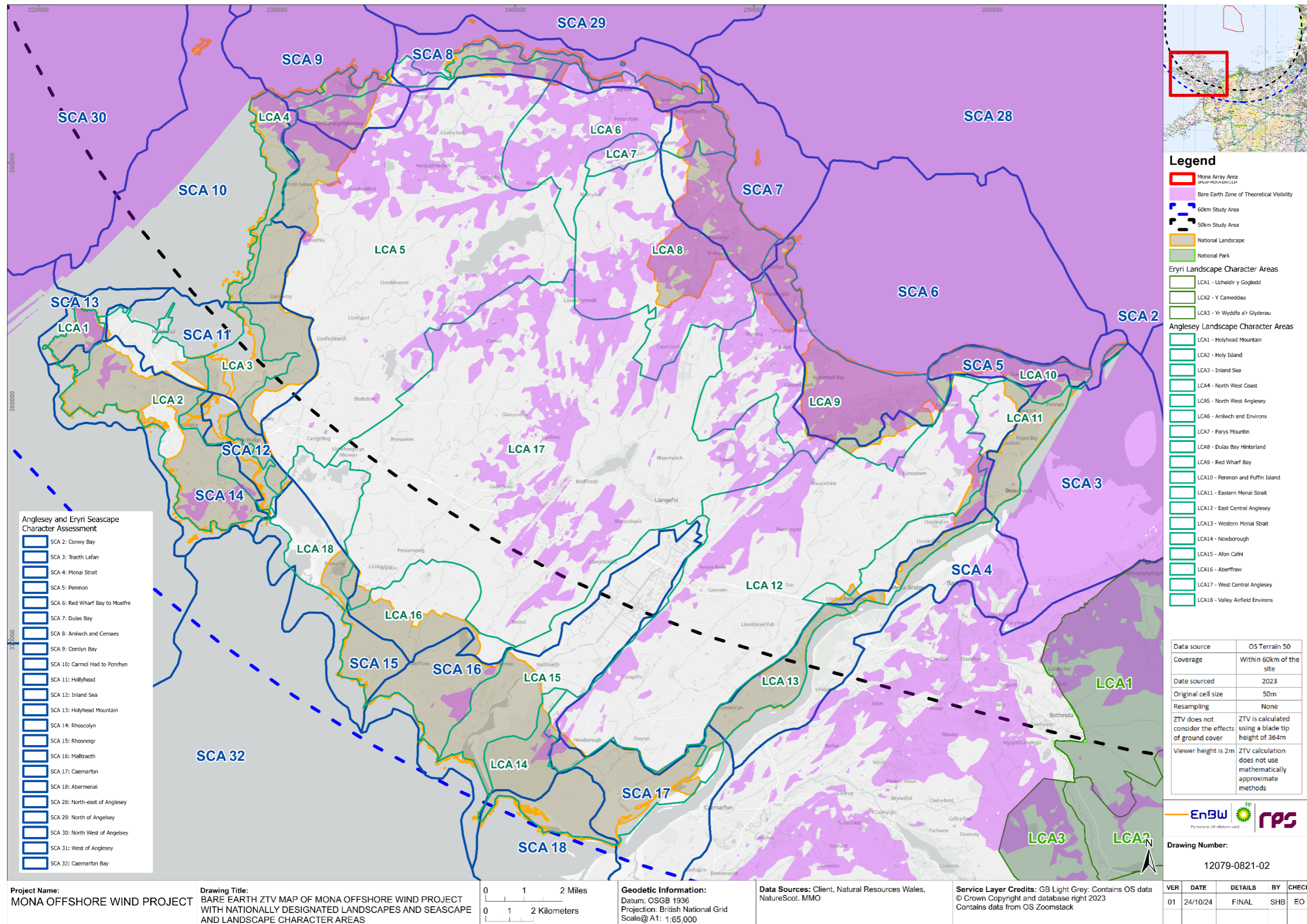


Figure 1.2: Mona Offshore Wind Project and Baseline Landscape and Seascape Character in Wales (sheet 2 of 5).



MONA OFFSHORE WIND PROJECT

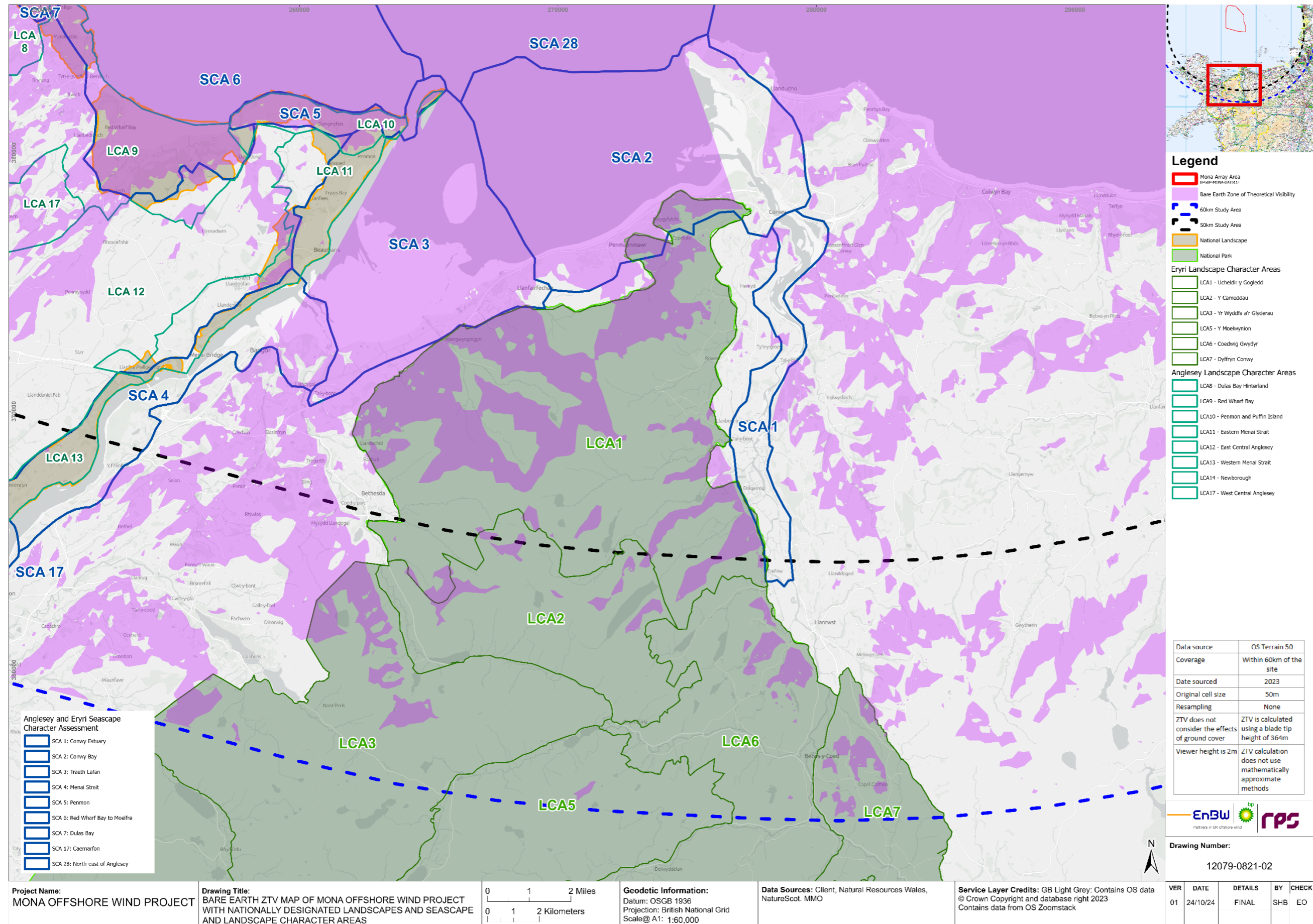


Figure 1.3: Mona Offshore Wind Project and Baseline Landscape and Seascape Character in Wales (sheet 3 of 5).



MONA OFFSHORE WIND PROJECT

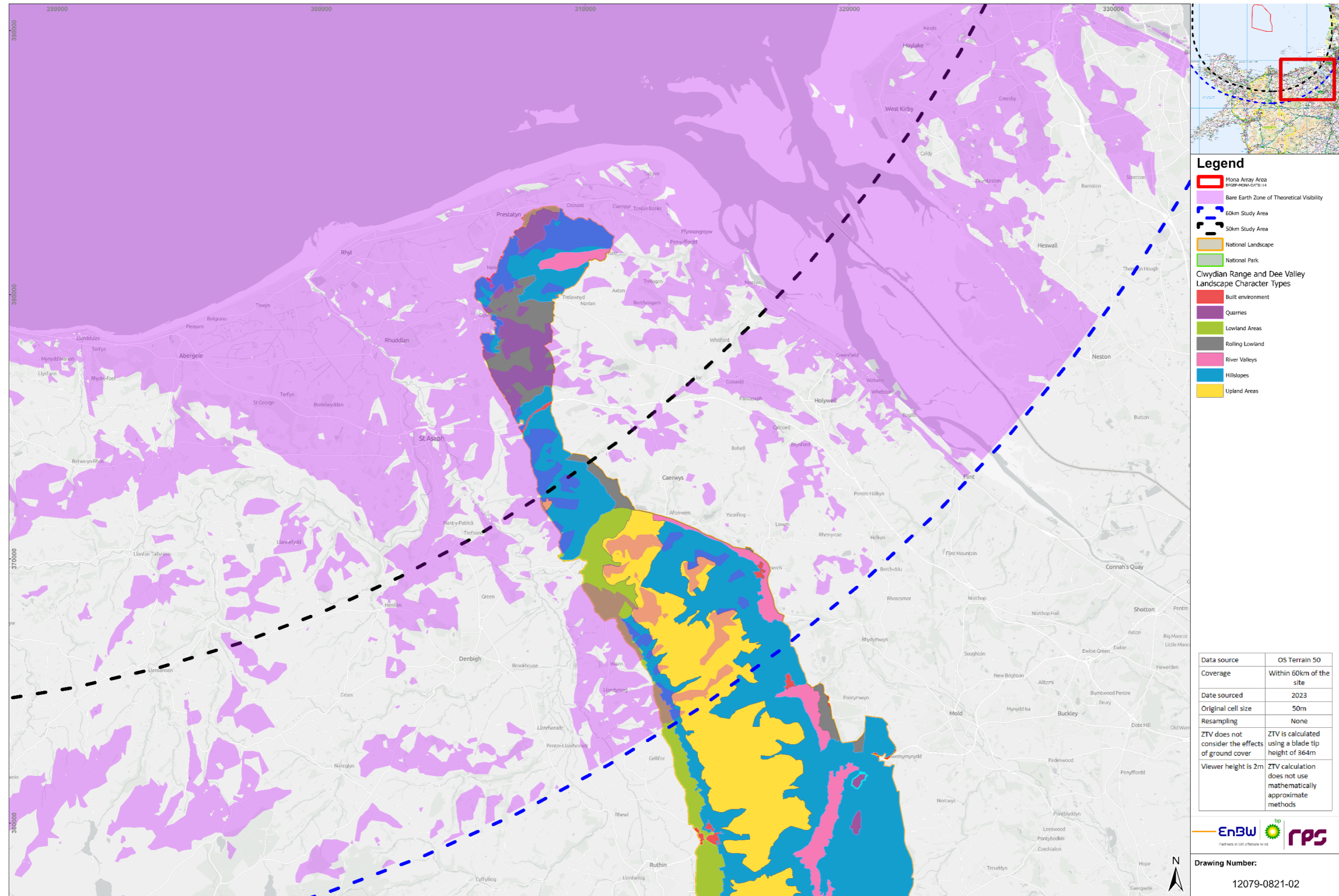


Figure 1.4: Mona Offshore Wind Project and Baseline Landscape and Seascape Character in Wales (sheet 4 of 5).



MONA OFFSHORE WIND PROJECT

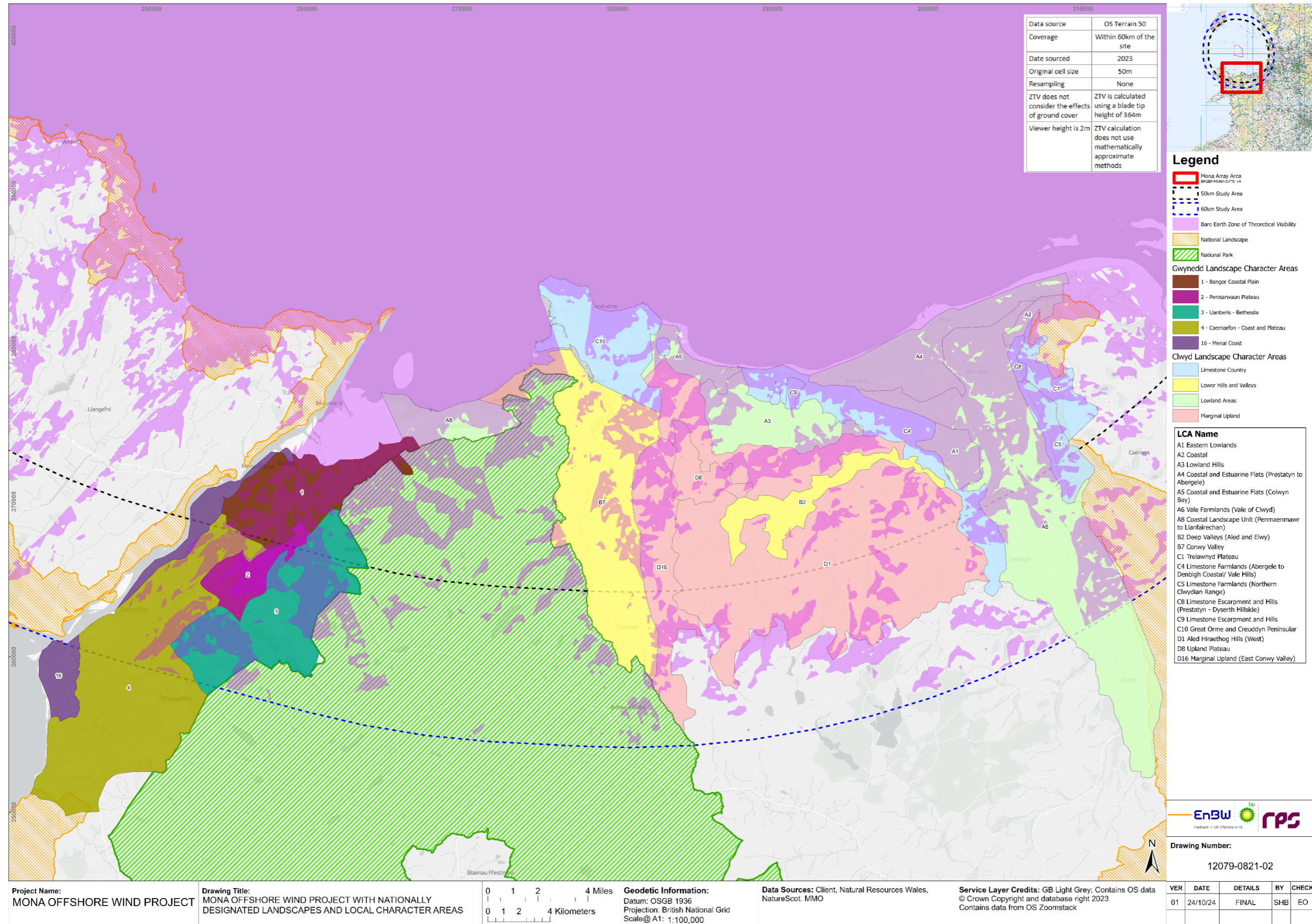


Figure 1.5: Mona Offshore Wind Project and Baseline Landscape and Seascape Character in Wales (sheet 5 of 5).



## Detailed Assessment

- 1.2.2.7 Further assessment of effects of the Mona Array Area on specific LCAs, and LCTs highlighted in tables above (Table 1.2, Table 1.3, Table 1.4, Table 1.5, and Table 1.6) within nationally designated landscapes is presented in Table 1.8 below. The LANDMAP visual and sensory areas within (or partially within) each LCA and LCT that overlap with the ZTV are listed in the first column of Table 1.8. Each LCA and LCT is ranked according to sensitivity in Table 1.8, along with the LANDMAP visual and sensory overall evaluation which follows a scale range of low, moderate, high and outstanding. LANDMAP is the Welsh National Character Baseline, an online resource, hosted by NRW.
- 1.2.2.8 An assessment of effects on the key characteristics of LCA 1 Northern Uplands in Eryri National Park is presented in Table 1.9.
- 1.2.2.9 Further detail on the assessment of effects of the Mona Array Area on specific landscape character areas and types outside these designated areas is presented in Table 1.10 below.
- 1.2.2.10 Further detail on the assessment of effects of the Mona Array Area on the seascape character of Anglesey highlighted in Table 1.7 is presented in Table 1.11.
- 1.2.2.11 The assessment has been undertaken using the assessment methodology set out in Volume 6, Annex 8.4: Seascape, landscape and visual impact assessment methodology (APP-104). The methodology is based on Guidelines for Landscape and Visual Impact Assessment: Third edition (Landscape Institute and Institute of Environmental Management and Assessment, 2013) and Landscape Institute Technical Guidance Note LITGN-2024-01: Notes and Clarifications on Aspects of Guidelines for Landscape and Visual Impact Assessment Third edition (GLVIA3) (published August 2024), with additional regional guidance (i.e. Landscape Sensitivity Assessment guidance for Wales (NRW guidance note GN 017, 2023)). NRW guidance note GN 017 (2023) is referred to in LITGN-2024-01 (2024) in section 5 Assessment of Landscape Effects, 5(4).
- 1.2.2.12 The approach to determining the significance of effects applies the methodology described in Volume 6, Annex 8.4: Seascape, landscape and Visual Resources Impact Assessment Methodology (APP-104) and is consistent with the approach used in Volume 2, Chapter 8 Seascape and visual resources (APP-060), which is in accordance with guidance as set out in paragraph 5.45 of White Consultants (2020).

MONA OFFSHORE WIND PROJECT

Table 1.8: Assessment of effects on LCAs and LCTs within nationally designated landscapes resulting from the Mona Array Area.

LCA / LCT	% of LCA/LCT highlighted on tip height ZTV 60 km	Distance to Mona Array Area (km)	Magnitude of Impact	Sensitivity of Receptor	Significance of Effect
<b>Isle of Anglesey NL</b>					
<p>Landscape Character Area 4. North West Coast.</p> <p>Representative viewpoints 2, 24, 57.</p> <p>LANDMAP Visual and Sensory Areas within this landscape, highlighted on the ZTV in the 60 km SLVIA Study Area:</p> <ul style="list-style-type: none"> <li>• YNSMNVS002 Mynydd y Garn</li> <li>• YNSMNVS008 North-west drumlins</li> <li>• YNSMNVS011 North coast hinterland</li> <li>• YNSMNVS034 Northwest coast</li> <li>• YNSMNVS035 North coast</li> <li>• YNSMNVS036 Cemlyn</li> <li>• YNSMNVS060 Amlwch</li> <li>• YNSMNVS068 Cemaes</li> <li>• YNSMNVS086 Wylfa power station</li> </ul>	47	31	<p><b>Negligible to Small</b> due mainly to the distance to the Mona Array Area.</p> <p>The ZTV indicates theoretical effects over most, but not all of the north coast overlooking the Irish Sea and Mona Array Area from the nearest most easterly point at Bull Bay (31 km from the Mona Array Area) extending westwards to Carmel Head (42 km to the Mona Array Area).</p> <p>The ZTV indicates little or no visibility on the west coast overlooking Holyhead Bay.</p>	<p><b>High</b> (distinctive landscape the majority of which lies within Isle of Anglesey NL and with outlook over the Irish Sea, albeit with some industrial influences such as the Wylfa Nuclear Power Plant).</p> <p>The overall evaluation for each LANDMAP visual and sensory area is as follows (sourced from LANDMAP database):</p> <ul style="list-style-type: none"> <li>• YNSMNVS002 - High</li> <li>• YNSMNVS008 - Moderate</li> <li>• YNSMNVS011 - High</li> <li>• YNSMNVS034 - High</li> <li>• YNSMNVS035 - High</li> <li>• YNSMNVS036 - Outstanding</li> <li>• YNSMNVS060 - Low</li> <li>• YNSMNVS068 – Moderate</li> <li>• YNSMNVS086 – Low</li> </ul> <p>Only one of the Visual and Sensory LANDMAP Aspect Areas that make up this LCA has an outstanding evaluation, the remaining eight evaluations are high, moderate or low. The Mona Array Area is visible from, but not a prominent part of the visible setting of this LCA.</p>	<p><b>Minor to moderate adverse</b></p> <p>Not significant.</p>

**MONA OFFSHORE WIND PROJECT**

LCA / LCT	% of LCA/LCT highlighted on tip height ZTV 60 km	Distance to Mona Array Area (km)	Magnitude of Impact	Sensitivity of Receptor	Significance of Effect
				Not all of the land included within this LCA lies within the NL. Therefore, the value is considered to be high (see NRW GN 017, 2023 paragraph 5.5. Note this guidance was also used for all the subsequent decisions on sensitivity of receptor throughout this assessment).	
<p>Landscape Character Area 5. North West Anglesey</p> <p>Representative viewpoints – 1.</p> <p>LANDMAP Visual and Sensory Areas within this landscape, highlighted on the ZTV in the 60 km SLVIA Study Area:</p> <ul style="list-style-type: none"> <li>• YNSMNVS002 - Mynydd y Garn</li> <li>• YNSMNVS008 - North-west drumlins</li> <li>• YNSMNVS009 - Mynydd Mechell</li> <li>• YNSMNVS010 – Drumlins with windfarms</li> <li>• YNSMNVS011 - North coast hinterland</li> <li>• YNSMNVS012 - Central smooth belt</li> <li>• YNSMNVS020 - Caergeiliog craggy lowlands</li> <li>• YNSMNVS056 - Llyn Alaw</li> <li>• YNSMNVS068 - Cemaes</li> </ul>	24	32	<p><b>Negligible to Small</b> due mainly to the distance to the Mona Array Area.</p> <p>The ZTV indicates theoretical effects over a relatively small part of this landscape near the north coast overlooking the Irish Sea. In reality, effects will be further reduced due to wooded vegetation screens.</p>	<p><b>High</b> (distinctive landscape part of which lies within Isle of Anglesey NL. An inland landscape located close to the coast, the northern part of which overlooks the Irish Sea to the north. A large part of this landscape is inland and remote from the coast.</p> <p>The overall evaluation for each LANDMAP visual and sensory area is as follows (sourced from LANDMAP database):</p> <ul style="list-style-type: none"> <li>• YNSMNVS002 - High</li> <li>• YNSMNVS008 - Moderate</li> <li>• YNSMNVS009 - High</li> <li>• YNSMNVS010 - Moderate</li> <li>• YNSMNVS011 - High</li> <li>• YNSMNVS012 - Moderate</li> <li>• YNSMNVS020 - Moderate</li> <li>• YNSMNVS056 - Moderate</li> <li>• YNSMNVS068 - Moderate</li> <li>• YNSMNVS069 - Moderate</li> </ul>	<p><b>Minor to moderate adverse</b></p> <p>Not significant.</p>

**MONA OFFSHORE WIND PROJECT**

LCA / LCT	% of LCA/LCT highlighted on tip height ZTV 60 km	Distance to Mona Array Area (km)	Magnitude of Impact	Sensitivity of Receptor	Significance of Effect
<ul style="list-style-type: none"> <li>YNSMNVS069 - Llanfechell</li> <li>YNSMNVS086 -Wylfa power station</li> <li>YNSMNVS091 - A55 corridor</li> </ul>				<ul style="list-style-type: none"> <li>YNSMNVS086 - Low</li> <li>YNSMNVS091 - Low</li> </ul> <p>None of the LANDMAP Visual and Sensory Aspect Areas that make up this LCA have an outstanding evaluation. Three have a high evaluation, the remaining nine evaluations are moderate or low. The Mona Array Area is visible from, but not a prominent part of the visible setting of this LCA. Therefore, the value is considered to be high (as the majority of this LCA lies within the NL).</p>	
<p>Landscape Character Area 6. Amlwch and Environs.</p> <p>Representative viewpoints 3 and 55.</p> <p>LANDMAP Visual and Sensory Areas within this landscape, highlighted on the ZTV in the 60 km SLVIA Study Area:</p> <ul style="list-style-type: none"> <li>YNSMNVS003 Mynydd Eilan</li> <li>YNSMNVS009 Mynydd Mechell</li> <li>YNSMNVS010 Drumlins with windfarms</li> <li>YNSMNVS011 North coast hinterland</li> <li>YNSMNVS012 Central smooth belt</li> <li>YNSMNVS035 North coast</li> </ul>	74	29	<p><b>Negligible to Small</b> due mainly to the distance to the Mona Array Area.</p> <p>The ZTV indicates theoretical visibility throughout most but not all of the LCA at approximate distances ranging from 29 to 38 km. The influence of the Mona Array Area will be small in scale at the closest point along the north coast and with the built-up area of Amlwch and a network of coastal roads in the foreground.</p>	<p><b>High</b> (a small part of the coastal landscape lies within Isle of Anglesey NL. Large extent of inland landscape with limited or no relationship to the coast. Special Landscape Area (SLA) designation applies to part of the inland landscape).</p> <p>The overall evaluation for each LANDMAP visual and sensory area is as follows (sourced from LANDMAP database):</p> <ul style="list-style-type: none"> <li>YNSMNVS003 - Moderate</li> <li>YNSMNVS009 - High</li> <li>YNSMNVS010 - Moderate</li> <li>YNSMNVS011 - High</li> <li>YNSMNVS012 - Moderate</li> </ul>	<p><b>Minor adverse</b></p> <p>Not significant.</p>

MONA OFFSHORE WIND PROJECT

LCA / LCT	% of LCA/LCT highlighted on tip height ZTV 60 km	Distance to Mona Array Area (km)	Magnitude of Impact	Sensitivity of Receptor	Significance of Effect
<ul style="list-style-type: none"> <li>YNSMNVS037 East coast</li> <li>YNSMNVS060 Amlwch</li> <li>YNSMNVS087 Parys Mountain</li> </ul>				<ul style="list-style-type: none"> <li>YNSMNVS035 - High</li> <li>YNSMNVS037 - High</li> <li>YNSMNVS060 - Low</li> <li>YNSMNVS087 - Outstanding</li> </ul> <p>Only one of the Visual and Sensory LANDMAP Aspect Areas that make up this LCA has an outstanding evaluation, the remaining eight evaluations are high, moderate or low. The Mona Array Area is visible from, but not a prominent part of the visible setting of this LCA. Not all of the land included within this LCA lies within the NL. Therefore, the value is considered to be high.</p>	
<p>Landscape Character Area 7. Parys Mountain.</p> <p>Representative viewpoints – none.</p> <p>LANDMAP Visual and Sensory Areas within this landscape, highlighted on the ZTV in the 60 km SLVIA Study Area:</p> <ul style="list-style-type: none"> <li>YNSMNVS010 Drumlins with windfarms</li> <li>YNSMNVS087 Parys Mountain</li> </ul>	49	32	<p><b>Negligible</b> due mainly to the distance to the Mona Array Area and the fact that this LCA is located inland with limited visual relationship to the coast and Irish Sea.</p> <p>Although the ZTV indicated theoretical visibility over the northwestern part of this LCA on the north facing slopes of Parys Mountain, these effects would arise with intervening farmland in the foreground and built-up areas such as Amlwch.</p>	<p><b>High</b> (distinctive characteristics and regional/local designation as an SLA). Located inland with limited relationship to coast due to intervening farmland in the foreground).</p> <p>The overall evaluation for each LANDMAP visual and sensory area is as follows (sourced from LANDMAP database):</p> <ul style="list-style-type: none"> <li>YNSMNVS010 - Moderate</li> <li>YNSMNVS087 - Outstanding</li> </ul> <p>Two LANDMAP Visual and Sensory Aspect Areas make up this LCA, one is outstanding, the other is moderate. The Mona Array Area is visible from, but not</p>	<p><b>Negligible to minor</b> adverse</p> <p>Not significant.</p>



## MONA OFFSHORE WIND PROJECT

LCA / LCT	% of LCA/LCT highlighted on tip height ZTV 60 km	Distance to Mona Array Area (km)	Magnitude of Impact	Sensitivity of Receptor	Significance of Effect
				a prominent part of the visible setting of this LCA. Therefore, the value is considered to be high.	
<p>Landscape Character Area 8. Dulas Bay Hinterland.</p> <p>Representative viewpoint 26.</p> <p>LANDMAP Visual and Sensory Areas within this landscape, highlighted on the ZTV in the 60 km SLVIA Study Area:</p> <ul style="list-style-type: none"> <li>• YNSMNVS003 Mynydd Eilan</li> <li>• YNSMNVS004 Mynydd Bodafon</li> <li>• YNSMNVS008 North-west drumlins</li> <li>• YNSMNVS010 Drumlins with windfarms</li> <li>• YNSMNVS012 Central smooth belt</li> <li>• YNSMNVS014 Benllech hinterland</li> <li>• YNSMNVS037 East coast</li> <li>• YNSMNVS038 Traeth Dulas</li> <li>• YNSMNVS073 Moelfre</li> </ul>	62	31	<p><b>Negligible to Small</b> due mainly to the distance to the Mona Array Area.</p> <p>The ZTV indicates theoretical visibility along the coast including Dulas Bay and the southern parts of this LCA. Extensive areas of woodland inland from the coast would provide visual screening of the coastline and the Irish Sea including the Mona Array Area.</p>	<p><b>High</b> (the northeastern half of this distinctive landscape is within the Isle of Anglesey NL with outlook over the Irish Sea.</p> <p>The overall evaluation for each LANDMAP visual and sensory area is as follows (sourced from LANDMAP database):</p> <ul style="list-style-type: none"> <li>• YNSMNVS003 - Moderate</li> <li>• YNSMNVS004 - High</li> <li>• YNSMNVS008 - Moderate</li> <li>• YNSMNVS010 - Moderate</li> <li>• YNSMNVS012 - Moderate</li> <li>• YNSMNVS014 - Moderate</li> <li>• YNSMNVS037 - High</li> <li>• YNSMNVS038 - Outstanding</li> <li>• YNSMNVS073 - Moderate</li> </ul> <p>Only one of the Visual and Sensory LANDMAP Aspect Areas that make up this LCA has an outstanding evaluation, the remaining eight evaluations are high or moderate. The Mona Array Area is visible from, but not a prominent part of the visible setting of this LCA. Not all of the land included within this LCA lies</p>	<p><b>Minor to moderate adverse</b></p> <p>Not significant.</p>

**MONA OFFSHORE WIND PROJECT**

LCA / LCT	% of LCA/LCT highlighted on tip height ZTV 60 km	Distance to Mona Array Area (km)	Magnitude of Impact	Sensitivity of Receptor	Significance of Effect
<p>Landscape Character Area 9. Red Wharf Bay.</p> <p>Representative viewpoint 27.</p> <p>LANDMAP Visual and Sensory Areas within this landscape, highlighted on the ZTV in the 60 km SLVIA Study Area:</p> <ul style="list-style-type: none"> <li>• YNSMNVS005 Mynydd Llwydiarth</li> <li>• YNSMNVS006 Pentraeth Forest</li> <li>• YNSMNVS012 Central smooth belt</li> <li>• YNSMNVS014 Benllech hinterland</li> <li>• YNSMNVS017 Eastern smooth belt</li> <li>• YNSMNVS022 Pentraeth valleys</li> <li>• YNSMNVS037 East coast</li> <li>• YNSMNVS039 Red Wharf Bay</li> <li>• YNSMNVS073 Moelfre</li> <li>• YNSMNVS074 Benllech</li> <li>• YNSMNVS075 Pentraeth</li> <li>• YNSMNVS095 Pentraeth Valleys Maritime</li> </ul>	69	33	<p><b>Negligible to Small</b> due mainly to the distance to the Mona Array Area.</p> <p>The ZTV indicates theoretical visibility along the coast at Benllech and Red Wharf Bay and Moelfre Headland. Further inland effects are more limited due to the screening afforded by local topography and areas of woodland.</p>	<p>within the NL. Therefore, the value is considered to be high.</p> <p><b>High</b> (the northeastern part of this distinctive landscape is within the Isle of Anglesey NL with outlook over the Irish Sea).</p> <p>The overall evaluation for each LANDMAP visual and sensory area is as follows (sourced from LANDMAP database):</p> <ul style="list-style-type: none"> <li>• YNSMNVS005 - High</li> <li>• YNSMNVS006 - High</li> <li>• YNSMNVS012 - Moderate</li> <li>• YNSMNVS014 - Moderate</li> <li>• YNSMNVS017 - Moderate</li> <li>• YNSMNVS022 - Moderate</li> <li>• YNSMNVS037 - High</li> <li>• YNSMNVS039 - Outstanding</li> <li>• YNSMNVS073 - Moderate</li> <li>• YNSMNVS074 - Low</li> <li>• YNSMNVS075 - Moderate</li> <li>• YNSMNVS095 - High</li> </ul> <p>Only one of the Visual and Sensory LANDMAP Aspect Areas that make up this LCA has an outstanding evaluation, the remaining eleven evaluations are either high, moderate or low. The Mona</p>	<p><b>Minor to moderate adverse</b></p> <p>Not significant.</p>

**MONA OFFSHORE WIND PROJECT**

LCA / LCT	% of LCA/LCT highlighted on tip height ZTV 60 km	Distance to Mona Array Area (km)	Magnitude of Impact	Sensitivity of Receptor	Significance of Effect
				Array Area is visible from, but not a prominent part of the visible setting of this LCA. Not all the land included within this LCA lies within the NL. Therefore, the value is considered to be high.	
<p>Landscape Character Area 10. Penmon and Puffin Island.</p> <p>Representative viewpoints 4 and 28.</p> <p>LANDMAP Visual and Sensory Areas within this landscape, highlighted on the ZTV in the 60 km SLVIA Study Area:</p> <ul style="list-style-type: none"> <li>• YNSMNVS005 Mynydd Llwydiarth</li> <li>• YNSMNVS015 Penmon plateau</li> <li>• YNSMNVS016 Llangoed vale</li> <li>• YNSMNVS017 Eastern smooth belt</li> <li>• YNSMNVS039 Red Wharf Bay</li> <li>• YNSMNVS040 Penmon limestone coast</li> <li>• YNSMNVS041 Puffin Island</li> </ul>	79	34	<p><b>Small</b> due mainly to the distance to the Mona Array Area.</p> <p>The ZTV indicates theoretical visibility over most of this coastal landscape. Isolated areas of woodland will screen effects resulting from the Mona Wind Turbines. Effects will be limited along the eastern coastline of this LCA due to the screening partly afforded by Puffin Island.</p>	<p><b>High</b> (distinctive landscape almost entirely within Isle of Anglesey NL and with outlook over the Irish Sea).</p> <p>The overall evaluation for each LANDMAP visual and sensory area is as follows (sourced from LANDMAP database):</p> <ul style="list-style-type: none"> <li>• YNSMNVS005 - High</li> <li>• YNSMNVS015 - High</li> <li>• YNSMNVS016 - Moderate</li> <li>• YNSMNVS017 - Moderate</li> <li>• YNSMNVS039 - Outstanding</li> <li>• YNSMNVS040 - High</li> <li>• YNSMNVS041 - Outstanding</li> </ul> <p>Two of the Visual and Sensory LANDMAP Aspect Areas that make up this LCA have an outstanding evaluation, the remaining four evaluations are either high or moderate. The Mona Array Area is visible from, but not a prominent part of the visible setting of this LCA. Not all the land included within this LCA lies within the</p>	<p><b>Minor to moderate adverse</b></p> <p>Not significant.</p>

MONA OFFSHORE WIND PROJECT

LCA / LCT	% of LCA/LCT highlighted on tip height ZTV 60 km	Distance to Mona Array Area (km)	Magnitude of Impact	Sensitivity of Receptor	Significance of Effect
<p>Landscape Character Area 12. East Central Anglesey</p> <p>Representative viewpoints – none</p> <p>LANDMAP Visual and Sensory Areas within this landscape, highlighted on the ZTV in the 60 km SLVIA Study Area:</p> <ul style="list-style-type: none"> <li>• YNSMNVS005 - Mynydd Llwydiarth</li> <li>• YNSMNVS017 - Eastern smooth belt</li> <li>• YNSMNVS018 - South-west ridges</li> <li>• YNSMNVS019 - Newborough Forest</li> <li>• YNSMNVS022 - Pentraeth valleys</li> <li>• YNSMNVS025 - Beaumaris wooded slopes</li> <li>• YNSMNVS027 - Malltraeth Marsh south slopes</li> <li>• YNSMNVS028 - Malltraeth Marsh</li> <li>• YNSMNVS078 – Gaerwen</li> <li>• YNSMNVS081 - Newborough</li> <li>• YNSMNVS091 - A55 corridor</li> </ul>	17	37	<p><b>Negligible</b> due mainly to the distance to the Mona Array Area and the limited extent of the effects as indicated in the ZTV. This LCA is located inland with limited visual relationship to the coast and Irish Sea.</p>	<p>NL. Therefore, the value is considered to be high.</p> <p><b>Medium</b> (distinctive landscape a very small part of which lies within Isle of Anglesey NL. An inland landscape, a small part of which overlooks the Irish Sea to the north. A large part of this landscape is inland and remote from the coast.</p> <p>The overall evaluation for each LANDMAP visual and sensory area is as follows (sourced from LANDMAP database):</p> <ul style="list-style-type: none"> <li>• YNSMNVS005 - High</li> <li>• YNSMNVS017 – Moderate</li> <li>• YNSMNVS018 – Moderate</li> <li>• YNSMNVS019 - Moderate</li> <li>• YNSMNVS022 – Moderate</li> <li>• YNSMNVS025 – High</li> <li>• YNSMNVS027 – Moderate</li> <li>• YNSMNVS028 - Moderate</li> <li>• YNSMNVS078 – Low</li> <li>• YNSMNVS081 - Moderate</li> <li>• YNSMNVS091 - Low</li> </ul> <p>None of the LANDMAP Visual and Sensory Aspect Areas that make up this LCA have an outstanding evaluation.</p>	<p><b>Negligible to minor adverse</b></p> <p>Not significant</p>

## MONA OFFSHORE WIND PROJECT

LCA / LCT	% of LCA/LCT highlighted on tip height ZTV 60 km	Distance to Mona Array Area (km)	Magnitude of Impact	Sensitivity of Receptor	Significance of Effect
				Two have a high evaluation, the remaining nine evaluations are moderate or low. The Mona Array Area is visible from, but not a prominent part of the visible setting of this LCA. Therefore, the value is considered to be medium (as all but a very small part of this LCA lies outside the NL).	
<p>Landscape Character Area 17. West Central Anglesey</p> <p>Representative viewpoints – none</p> <p>LANDMAP Visual and Sensory Areas within this landscape, highlighted on the ZTV in the 60 km SLVIA Study Area:</p> <ul style="list-style-type: none"> <li>• YNSMNV008 - North-west drumlins</li> <li>• YNSMNV012 - Central smooth belt</li> <li>• YNSMNV013 - Central/south-west craggy belt</li> <li>• YNSMNV014 - Benllech hinterland</li> <li>• YNSMNV022 - Pentraeth valleys</li> <li>• YNSMNV059 - Llangefni</li> <li>• YNSMNV070 - Llanerchymedd</li> <li>• YNSMNV072 - Gwalchmai</li> </ul>	23	38	<p><b>Negligible</b> due mainly to the distance to the Mona Array Area and the limited extent of the effects as indicated in the ZTV. This LCA is located inland with limited visual relationship to the coast and Irish Sea.</p>	<p><b>Medium</b> (an inland landscape, a very small part of which lies within Isle of Anglesey NL, near the south coast)</p> <p>The overall evaluation for each LANDMAP visual and sensory area is as follows (sourced from LANDMAP database):</p> <ul style="list-style-type: none"> <li>• YNSMNV008 - Moderate</li> <li>• YNSMNV012 – Moderate</li> <li>• YNSMNV013 – Moderate</li> <li>• YNSMNV014 – Moderate</li> <li>• YNSMNV022 - Moderate</li> <li>• YNSMNV059 - Moderate</li> <li>• YNSMNV070 - Moderate</li> <li>• YNSMNV072 – Moderate</li> <li>• YNSMNV088 – Low</li> <li>• YNSMNV089 – Low</li> <li>• YNSMNV091 - Low</li> </ul>	<p><b>Negligible to minor adverse</b></p> <p>Not significant</p>

**MONA OFFSHORE WIND PROJECT**

LCA / LCT	% of LCA/LCT highlighted on tip height ZTV 60 km	Distance to Mona Array Area (km)	Magnitude of Impact	Sensitivity of Receptor	Significance of Effect
<ul style="list-style-type: none"> <li>• YNSMNVS088 - Caer Glaw Quarry</li> <li>• YNSMNVS089 - Mona airfield/showground</li> <li>• YNSMNVS091 - A55 corridor</li> </ul>				<p>None of the LANDMAP Visual and Sensory Aspect Areas that make up this LCA have an outstanding or high evaluation. Eight have a moderate evaluation and the remaining three have a low evaluation. The Mona Array Area is visible from, but not a prominent part of the visible setting of this LCA. Therefore, the value is considered to be medium (as all but a very small part of this LCA lies outside the NL).</p>	
<b>Eryri National Park</b>					
<p>Landscape Character Area 1 Northern Uplands (Ucheldir y Gogledd). Representative viewpoints 29, 30, 31, 32 and 33. LANDMAP Visual and Sensory Areas within this landscape, highlighted on the ZTV in the 60 km SLVIA Study Area:</p> <ul style="list-style-type: none"> <li>• GWNDDVS004 Wig</li> <li>• GWNDDVS008 Abergwyngregyn</li> <li>• SNPVS048 Snowdon uplands</li> <li>• SNPVS071 Carneddau Mountains</li> <li>• SNPVS072 Carneddau uplands</li> <li>• SNPVS073 Abergwyngregyn</li> <li>• SNPVS074 Llanfairfechan/Penmaenmawr</li> </ul>	37	36	<p><b>Negligible to small</b> due mainly to the distance to the Mona Array Area. The ZTV indicates theoretical visibility over parts of this landscape in the north and northwest including mountain summits of Tal y Fan and Foel Lus. Large areas of woodland in the northwest, inland from Llanfairfechan, will limit the effects.</p>	<p><b>High</b> (distinctive landscape entirely within Eryri NP and with outlook over the Irish Sea). The overall evaluation for each LANDMAP visual and sensory area is as follows (sourced from LANDMAP database):</p> <ul style="list-style-type: none"> <li>• GWNDDVS004 - Moderate</li> <li>• GWNDDVS008 - Moderate</li> <li>• SNPVS048 - Outstanding</li> <li>• SNPVS071 - Outstanding</li> <li>• SNPVS072 - High</li> <li>• SNPVS073 - High</li> <li>• SNPVS074 - Moderate</li> <li>• SNPVS076 - Moderate</li> </ul>	<p><b>Minor to moderate adverse</b> Not significant.</p>



**MONA OFFSHORE WIND PROJECT**

LCA / LCT	% of LCA/LCT highlighted on tip height ZTV 60 km	Distance to Mona Array Area (km)	Magnitude of Impact	Sensitivity of Receptor	Significance of Effect
<ul style="list-style-type: none"> <li>• SNPVS076 Capelulo valley</li> <li>• SNPVS077 Conwy valley farmland</li> <li>• SNPVS078 Penmaenbala</li> <li>• CNWVS015 Porth valley sides</li> <li>• CNWVS022 Coastal hills</li> <li>• CNWVS053 A55</li> <li>• CNWVS065 Conwy estuary golf courses</li> <li>• SNPVS123 no name</li> </ul>				<ul style="list-style-type: none"> <li>• SNPVS077 - Moderate</li> <li>• SNPVS078 - High</li> <li>• CNWVS015 - Outstanding</li> <li>• CNWVS022 - High</li> <li>• CNWVS053 - Low</li> <li>• CNWVS065 - Moderate</li> <li>• SNPVS123 - High</li> </ul> <p>Three of the Visual and Sensory LANDMAP Aspect Areas that make up this LCA have an outstanding evaluation, the remaining twelve evaluations are either high, moderate or low. The Mona Array Area is visible from, but not a prominent part of the visible setting of this LCA. Not all the land included within this LCA lies within the Eryri NP. Therefore, the value is considered to be high.</p>	
<b>Clwydian Range and Dee Valley National Landscape</b>					
<p>Lowland Areas</p> <p>Representative viewpoint – none</p> <p>LANDMAP Visual and Sensory Areas within this landscape, highlighted on the ZTV in the 60 km SLVIA Study Area:</p> <ul style="list-style-type: none"> <li>• DNBGHVS003 - Coastal Farmland Gronant</li> </ul>	21	41	<p><b>Negligible</b> due mainly to the distance to the Mona Array Area and the limited extent of the effects as indicated in the ZTV. This LCA is located inland with limited visual relationship to the coast and Irish Sea.</p>	<p><b>High</b> (distinctive landscape entirely within Clwydian Range and Dee Valley NL. An inland landscape with limited or no relationship to the Irish Sea).</p> <p>The overall evaluation for each LANDMAP visual and sensory area is as follows (sourced from LANDMAP database):</p> <ul style="list-style-type: none"> <li>• DNBGHVS003 - Moderate</li> </ul>	<p><b>Negligible to minor adverse</b></p> <p>Not significant.</p>

**MONA OFFSHORE WIND PROJECT**

LCA / LCT	% of LCA/LCT highlighted on tip height ZTV 60 km	Distance to Mona Array Area (km)	Magnitude of Impact	Sensitivity of Receptor	Significance of Effect
<ul style="list-style-type: none"> <li>• DNBGHVS016 - Vale Wooded Estate-South of Dyserth</li> <li>• DNBGHVS031 - Vale of Clwyd-North of Denbigh</li> <li>• DNBGHVS044 - Vale of Clwyd-Denbigh-Ruthin</li> </ul>				<ul style="list-style-type: none"> <li>• DNBGHVS016 - High</li> <li>• DNBGHVS031 - High</li> <li>• DNBGHVS044 - High</li> </ul> <p>None of the Visual and Sensory LANDMAP Aspect Areas that make up this LCA have an outstanding evaluation. Three have a high evaluation and the remaining one a moderate evaluation. The Mona Array Area is visible from, but not a prominent part of the visible setting of this LCA. Therefore, the value is considered to be high.</p>	

MONA OFFSHORE WIND PROJECT

LCA / LCT	% of LCA/LCT highlighted on tip height ZTV 60 km	Distance to Mona Array Area (km)	Magnitude of Impact	Sensitivity of Receptor	Significance of Effect
<p>Rolling Lowland. Representative viewpoint 54. LANDMAP Visual and Sensory Areas within this landscape, highlighted on the ZTV in the 60 km SLVIA Study Area:</p> <ul style="list-style-type: none"> <li>• FLNTVS008 no name</li> <li>• DNBGHVS017 Coastal Hills Gronant</li> <li>• DNBGHVS021 Limestone Plateau Trelawnyd</li> <li>• DNBGHVS024 Coed Cwm</li> <li>• FLNTVS069 Llanfynydd to Higher Kinnerton farmland</li> </ul>	44	41	<p><b>Negligible</b> due mainly to the distance to the Mona Array Area and the fact that this landscape is located inland and the character of which is influenced by the built-up coastal settlement of Prestatyn in the foreground.</p>	<p><b>High</b> (distinctive landscape entirely within Clwydian Range and Dee Valley NL and with partial outlook over the Irish Sea).</p> <p>The overall evaluation for each LANDMAP visual and sensory area is as follows (sourced from LANDMAP database):</p> <ul style="list-style-type: none"> <li>• FLNTVS008 - Moderate</li> <li>• DNBGHVS017 - High</li> <li>• DNBGHVS021 – Moderate</li> <li>• DNBGHVS024 – Moderate</li> <li>• FLNTVS069 - Moderate</li> </ul> <p>None of the Visual and Sensory LANDMAP Aspect Areas that make up this LCA have an outstanding evaluation. One has a high evaluation and the remaining four moderate evaluations. The Mona Array Area is visible from, but not a prominent part of the visible setting of this LCA. Therefore, the value is considered to be high.</p>	<p><b>Negligible to minor adverse</b> Not significant.</p>

MONA OFFSHORE WIND PROJECT

Table 1.9: Key Characteristics of LCA 1 Northern Uplands (Ucheldir y Gogledd) Eryri NP – Effects of Mona Array Area.

<b>Key Characteristics of LCA 1 - Supplementary Planning Guidance: Landscapes and Seascapes of Eryri</b> (Bold indicates those key characteristics considered to be the ‘valued attributes’ of the Landscape Character Area; aspects of character that contribute greatly to local distinctiveness.)	<b>Effects of the Mona Array Area</b>
<b>Dramatic and varied topography</b> ; rising up steeply from the Conwy coast at Penmaen-bach Point to form a series of mountains, peaking at Foel-Fras (942 metres). Foothills drop down from the mountains to form a more intricate landscape to the east and west.	The dramatic and varied topography that rises up steeply from the Conwy Coast is partially highlighted in the ZTV for the Mona Array Area. The effects of the Mona Array Area will extend over Conwy Mountain and Foel Lus. The proposed wind turbines would be 36 km from these landscapes and would be experienced with the coastline in the foreground featuring built development (settlements), holiday parks and the busy A55 road.
<b>Complex, internationally renowned geological and geomorphological landscape</b> , with a mixture of igneous and sedimentary rocks shaped by ancient earth movements and exposed and re-modelled by glaciation.	The Mona Offshore Wind Project would not directly affect the complex internationally renowned geological and geomorphological landscape.
<b>Multiple streams draining from the mountains</b> , in some places plunging down hanging valleys as waterfalls. U-shaped valleys carving through the mountains, often with extensive moraine and head deposits.	The Mona Offshore Wind Project would not directly affect the multiple streams draining from the mountains as a result of the Mona Array Area.
<b>Reservoirs at Llyn Anafon, Dulyn, Melynlyn and Llyn Eigiau.</b>	These are not sensitive landscape elements.
Small bands of woodland and spinneys associated with the lower-lying farmland and valley sides, including <b>nationally designated native woodlands</b> at Coedydd Aber, Coed Merchlyn, Coed Gorswen and Coed Dolgarrog. Prominent forestry blocks on the lower slopes of Llwytmor Bach and at Parc Mawr	The Mona Offshore Wind Project would not directly affect these woodlands. Coedydd Aber, 42 km from Mona Array Area within a steep sided valley immediately south of Abergwyngregyn. The valley results in channelled views towards Conwy Bay and the Anglesey coastline beyond and not as focused on the Irish Sea and the Mona Array Area. Coed Merchlyn, woodland west of the settlement of Merchlyn – very limited overlap with ZTV – very limited effects. Coed Gorswen 43 km inland on the western side of the Conwy Valley -not highlighted on ZTV – no effect Coed Dolgarrog is within the Conwy Valley (near the settlement of Dolgarrog), 47 km from the Mona Array Area. Although partially highlighted on the ZTV it is unlikely to be affected.

## MONA OFFSHORE WIND PROJECT

### Key Characteristics of LCA 1 - Supplementary Planning Guidance: Landscapes and Seascapes of Eryri

(Bold indicates those key characteristics considered to be the 'valued attributes' of the Landscape Character Area; aspects of character that contribute greatly to local distinctiveness.)

### Effects of the Mona Array Area

<p><b>Large-scale, unenclosed mountains contrasting with small historic field patterns on the foothills.</b> The intermediate area defined by large <b>regular enclosures of ffridd</b>, providing valuable cultural and natural links between the uplands and their surrounding lowlands.</p>	<p>The Mona Offshore Wind Project would not directly affect Large-scale, unenclosed mountains contrasting with small historic field patterns on the foothills.</p>
<p>Enclosed pasture fields divided by <b>stone walls or hedgerows</b>, often with frequent hedgerow trees. <b>Rough common land grazing by sheep</b> on the mountains.</p>	<p>The Mona Offshore Wind Project would not directly affect enclosed pasture fields divided by stone walls or hedgerows</p>
<p><b>Internationally important montane habitats and species</b> within the Eryri SAC/SSSI, including rare arctic-alpine plants, montane heaths, cliff ledges and wetlands. Wet and sessile oak woodlands found within the Coedydd Aber SAC/SSSI/NNR, linking the mountains to the north coast.</p>	<p>The Mona Offshore Wind Project would not directly affect the fabric of the landscape that reflects these internationally important habitats and species.</p>
<p><b>Sychnant Pass Site of Special Scientific Interest (SSSI)</b>, in the north-east of the LCA, comprising dry heath, acid grassland, bracken, marshland, ponds and streams – providing a naturalistic backdrop to the nearby Conwy Estuary.</p>	<p>Sychnant Pass extends from Conwy to Penmaenmawr. The section between Conwy and Capelulo is outside the ZTV, due to its location between two mountainous areas. Further west, the section between Capelulo and Penmaenmawr is highlighted in the ZTV however in reality, effects from the Mona Array Area would be very limited due t built up areas of the coast.</p>
<p><b>Wealth of nationally important archaeological features</b> including Bronze Age funerary and ritual monuments (e.g. standing stones at Bwlch y Ddeufaen), prominent Iron Age hillforts (e.g. Maes y Gaer and Dinas) and evidence of early settlement, field systems and transport routes (e.g. the Roman road passing through Bwlch y Ddeufaen and 11th century Aber Castle).</p>	<p>Outside scope of SLVIA.</p>
<p><b>The remains of 19th and 20th century slate quarrying</b> found throughout, including disused quarries and tips.</p>	<p>Outside scope of SLVIA.</p>



MONA OFFSHORE WIND PROJECT

**Key Characteristics of LCA 1 - Supplementary Planning Guidance: Landscapes and Seascapes of Eryri**

(Bold indicates those key characteristics considered to be the 'valued attributes' of the Landscape Character Area; aspects of character that contribute greatly to local distinctiveness.)

**Effects of the Mona Array Area**

**Uninhabited mountains, with large areas of open access land** and a sparse network of rights of way (but no road access). Lower-level enclosed farmland includes scattered stone and slate-built farmsteads and occasional clustered hamlets linked by winding rural roads.

The ZTV indicated theoretical effects over limited areas of the north and northwest facing mountain slopes and open access land closest to the coastline. These effects are documented in Volume 2, Chapter 8: Seascape and visual resources (APP-060) and were supported by assessment at viewpoints listed below. In relation to open access land, the assessment concluded:

*Overall, the magnitude of visual impact during the operations and maintenance phase caused by the Mona Array Area, situated offshore at the distances specified, in relation to people using Access Land for informal recreation in north Anglesey and within Eryri is deemed to be negligible to small at most. The sensitivity of the receptor is high. The effect will be minor adverse at most, which is not significant.* (paragraph 8.8.3.53).

Representative viewpoint 30 – Garreg Fawr, Eryri National Park (42.1 km) (Volume 6, Annex 8.6: Seascape visualisations, Figures 26.1 and 26.2 of the Environmental Statement).

Representative viewpoint 31 – Tal y Fan summit, Eryri National Park (42 km), (m Volume 6, Annex 8.6: Seascape visualisations, Figures 27.1 and 27.2 of the Environmental Statement).

Representative viewpoint 32 – Foel Lus summit, Eryri National Park (38.5 km), (Volume 6, Annex 8.6: Seascape visualisations, Figures 28.1 and 28.2 of the Environmental Statement).

Representative viewpoint 33 – Conwy Mountain summit, Eryri National Park (36.7 km) (Volume 6, Annex 8.6: Seascape visualisations, Figures 29.1 and 29.2 of the Environmental Statement).

Representative viewpoint 6 - Carnedd Llewellyn, Eryri National Park (Volume 6, Annex 8.6: Seascape visualisations, Figures 6.1 and 6.2 of the Environmental Statement).

Historic settlement of Abergwyngregyn (a Conservation Area) occupying a sheltered location on the banks of the River Aber; a strategic starting point for travellers crossing the Menai Strait. The village of Llanllechid (also a Conservation Area) straddles the National Park boundary in the western foothills.

Cultural heritage issue - Highlighted on the ZTV. The A55 is immediately north of this settlement and so effects in reality from Mona Array Area would be limited. Small areas of woodland in between the settlement and the offshore environment would result in no effects.

MONA OFFSHORE WIND PROJECT

<b>Key Characteristics of LCA 1 - Supplementary Planning Guidance: Landscapes and Seascapes of Eryri</b> (Bold indicates those key characteristics considered to be the 'valued attributes' of the Landscape Character Area; aspects of character that contribute greatly to local distinctiveness.)	<b>Effects of the Mona Array Area</b>
<b>Mountains forming a dramatic backdrop to the nearby coast and seascape</b> (including the A55 coast road) frequently characterising views from Anglesey, the Menai Strait and the Conwy coastline.	The mountains as backdrop to the coast that frequently characterise view from Anglesey, Menai Strait and Conwy Coastline are mostly unaffected by the Mona Array Area. The mountain skyline of Eryri is generally enjoyed in views away from the offshore environment of the Irish Sea.
<b>Long views north across the coastline, out to sea and to the Isle of Anglesey.</b> The offshore windfarms in the Irish Sea are visible features on the distant horizon. Views south are contained by the mountains of the Carneddau Range.	Long views north across the coastline and the Isle of Anglesey will be affected by the Mona Offshore Wind Project however these effects will not be significant, as these views already contain the existing offshore wind farms and other development, as well as marine traffic. Views south towards the Carneddau Range will be unaffected.
<b>A highly tranquil, remote landscape</b> with few modern intrusions and a pervading 'wilderness' quality associated with the mountains.	The part of the Eryri NP that is located closest to the coastline is of lower tranquillity due to the influence of coastal settlements, caravan parks and the A55 and the railway. It is these northerly areas of lesser tranquillity that will be affected by the Mona Array Area.

**MONA OFFSHORE WIND PROJECT**
**Table 1.10: Assessment of effects on LCAs and LCTs outside nationally designated landscapes resulting from the Mona Array Area.**

LCA / LCT	% of LCA/LCT highlighted on tip height ZTV 50 km	Distance to Mona Array Area (km)	Magnitude of Impact	Sensitivity of Receptor	Significance of Effect.
<b>Gwynedd</b>					
1 Bangor Coastal Plain	68	41	<b>Negligible</b> – due to the distance to the Mona Array Area. The extent of the landscape that would be affected is less than that indicated by the ZTV due to screening by woodland and built-up areas including the coastal town of Bangor.	<b>High</b> (strong distinctive visually exposed coastal character east of Aber Ogwen which would be susceptible to Mona Offshore Wind Turbines. The western part of the coastline is of lower susceptibility due to the built-up area of Bangor and extensive woodland at Penrhyn. Some detractors such as the A55 busy road. Coastal location.)  The overall evaluation for each LANDMAP visual and sensory area is as follows (sourced from LANDMAP database): <ul style="list-style-type: none"> <li>• GWNDDVS001 - High</li> <li>• GWNDDVS002 – Moderate</li> <li>• GWNDDVS003 – High</li> <li>• GWNDDVS004 – Moderate</li> <li>• GWNDDVS005 – High</li> <li>• GWNDDVS006 – Moderate</li> <li>• GWNDDVS007 – Moderate</li> <li>• GWNDDVS008 – Moderate</li> <li>• GWNDDVS086 – Moderate</li> <li>• SNPVS072 - High</li> <li>• SNPVS073 – High</li> <li>• SNPVS074 – Moderate</li> </ul>	<b>Minor adverse</b> Not significant

MONA OFFSHORE WIND PROJECT

LCA / LCT	% of LCA/LCT highlighted on tip height ZTV 50 km	Distance to Mona Array Area (km)	Magnitude of Impact	Sensitivity of Receptor	Significance of Effect.
				<ul style="list-style-type: none"> <li>SNPVS131 - High</li> </ul> <p>Medium to High value - A valued landscape with designated SLAs within and a small part of which overlaps with Eryri National Park. Penrhyn Castle and wooded landscape is a designated World Heritage Site (WHS)</p>	
2 Penisarwaun Plateau	56	48	<p><b>Negligible</b> – due to the distance to the Mona Array Area. The extent of the landscape that would be affected is less than that indicated by the ZTV due to screening by woodland</p>	<p><b>Medium</b> (distinctive characteristics and relative absence of detractors. This landscape has no coastal edge).</p> <p>The overall evaluation for each LANDMAP visual and sensory area is as follows (sourced from LANDMAP database):</p> <ul style="list-style-type: none"> <li>GWNDDVS006 – Moderate</li> <li>GWNDDVS011 - Moderate</li> </ul> <p>Medium value – A valued landscape part of which is a designated special landscape area</p>	<p><b>Negligible to Minor adverse</b> Not significant</p>

MONA OFFSHORE WIND PROJECT

LCA / LCT	% of LCA/LCT highlighted on tip height ZTV 50 km	Distance to Mona Array (km)	Magnitude of Impact	Sensitivity of Receptor	Significance of Effect.
3 Llanberis - Bethesda	42	47	<p><b>Negligible</b> – due to the distance to the Mona Array Area. The extent of the landscape that would be affected is less than that indicated by the ZTV due to screening by woodland</p>	<p><b>Medium</b> (distinctive characteristics although Penrhyn quarry is a detracting element. This landscape has no coastal edge).</p> <p>The overall evaluation for each LANDMAP visual and sensory area is as follows (sourced from LANDMAP database):</p> <ul style="list-style-type: none"> <li>• GWNDDVS006 – Moderate</li> <li>• GWNDDVS007 – Moderate</li> <li>• GWNDDVS008 – Moderate</li> <li>• GWNDDVS009 – Low</li> <li>• GWNDDVS011 – Moderate</li> <li>• SNPVS073 - High</li> </ul> <p>Medium value – A valued landscape a large part of which is a designated Special Landscape Area</p>	<p><b>Negligible to Minor adverse</b> Not significant</p>



**MONA OFFSHORE WIND PROJECT**

LCA / LCT	% of LCA/LCT highlighted on tip height ZTV 50 km	Distance to Mona Array Area (km)	Magnitude of Impact	Sensitivity of Receptor	Significance of Effect.
-----------	--	----------------------------------	---------------------	-------------------------	-------------------------

**Conwy and Denbighshire**

A1 Eastern Lowlands	93	44	<b>Negligible</b> – due to the distance to the Mona Array Area and the inland character with no relationship to the coast.	<p><b>Medium</b> (An inland landscape with wooded landcover and of less susceptibility to offshore wind turbines. Some detractors such as overhead powerlines, business parks. Located inland from the coast).</p> <p>The overall evaluation for each LANDMAP visual and sensory area is as follows (sourced from LANDMAP database):</p> <ul style="list-style-type: none"> <li>• DNBGHVS014 – Moderate</li> <li>• DNBGHVS026 – Low</li> <li>• DNBGHVS030 – Moderate</li> <li>• DNBGHVS033 – Moderate</li> <li>• DNBGHVS035 – High</li> <li>• DNBGHVS037 - High</li> </ul> <p>Medium value – an undesignated landscape.</p>	<b>Negligible to minor adverse</b> not significant
---------------------	----	----	--	---	---

**MONA OFFSHORE WIND PROJECT**

LCA / LCT	% of LCA/LCT highlighted on tip height ZTV 50 km	Distance to Mona Array (km)	Magnitude of Impact	Sensitivity of Receptor	Significance of Effect.
A2 Coastal	93	41	<p><b>Negligible</b> – due to the distance to the Mona Array Area, the screening afforded by existing woodland and the influence of the built-up area of Prestatyn closer to the coastline.</p>	<p><b>Medium to High</b> (distinctive hill farmland with outlook over the coast and built-up landscape of Prestatyn in foreground. This landscape has no coastal edge).                      The overall evaluation for each LANDMAP visual and sensory area is as follows (sourced from LANDMAP database):</p> <ul style="list-style-type: none"> <li>• FLNTVS016 – High</li> <li>• DNBGHVS003 – Moderate</li> <li>• DNBGHVS004 – Low</li> <li>• DNBGHVS009 – Moderate</li> <li>• DNBGHVS017 – High</li> <li>• DNBGHVS018 - Outstanding</li> </ul> <p>Medium to High value - overlooked by foothills to the Clwydian Range partially located within the CRDV NL.</p>	<p><b>Minor adverse</b> not significant</p>

**MONA OFFSHORE WIND PROJECT**

<b>LCA / LCT</b>	<b>% of LCA/LCT highlighted on tip height ZTV 50 km</b>	<b>Distance to Mona Array (km)</b>	<b>Magnitude of Impact</b>	<b>Sensitivity of Receptor</b>	<b>Significance of Effect.</b>
A3 Lowland Hills	33	36	<b>Negligible</b> – due to distance. Also, the extent of the effects is limited according to the ZTV and further limited by the screening afforded by woodland.	<b>Medium to High</b> (farmed landscape with woodlands as distinctive features and relative absence of detractors. Located inland from the coast.  The overall evaluation for each LANDMAP visual and sensory area is as follows (sourced from LANDMAP database): <ul style="list-style-type: none"> <li>• CNWVS020 – High</li> <li>• CNWVS021 – High</li> <li>• CNWVS023 – Moderate</li> <li>• CNWVS033 – Moderate</li> <li>• CNWVS066 - High</li> </ul> Medium to High value –the eastern half designated as an SLA.	<b>Negligible to Minor adverse</b> not significant
A4 Coastal and Estuarine Flats (Prestatyn to Abergele)	98	38	<b>Negligible</b> – due to distance and the screening afforded by coastal settlements.	<b>Low to Medium</b> (distinctive coastline and beach between Prestatyn and Abergele. The coastal part is susceptible although this beach is backed by continuous coastal settlement of Prestatyn, Rhyl and Abergele).  The overall evaluation for each LANDMAP visual and sensory area is as follows (sourced from LANDMAP database): <ul style="list-style-type: none"> <li>• DNBGHVS001 – High</li> <li>• DNBGHVS002 – High</li> <li>• DNBGHVS003 – Moderate</li> <li>• DNBGHVS004 – Low</li> </ul>	<b>Negligible to Minor adverse</b> not significant

**MONA OFFSHORE WIND PROJECT**

LCA / LCT	% of LCA/LCT highlighted on tip height ZTV 50 km	Distance to Mona Array Area (km)	Magnitude of Impact	Sensitivity of Receptor	Significance of Effect.
				<ul style="list-style-type: none"> <li>• DNBGHVS005 – High</li> <li>• DNBGHVS007 – Moderate</li> <li>• DNBGHVS009 – Moderate</li> <li>• DNBGHVS012 – High</li> <li>• DNBGHVS013 – Moderate</li> <li>• DNBGHVS014 – Moderate</li> <li>• DNBGHVS015 – High</li> <li>• FLNTVS079 – Moderate</li> <li>• CNWVS014 – High</li> <li>• CNWVS021 – High</li> <li>• CNWVS024 – Moderate</li> <li>• CNWVS034 – Low</li> <li>• CNWVS035 – Low</li> <li>• CNWVS052 – High</li> <li>• CNWVS053 – Low</li> <li>• CNWVS062 – Low</li> <li>• CNWVS070 - Moderate</li> </ul> <p>Low to Medium value – an undesignated coastal landscape.</p>	

**MONA OFFSHORE WIND PROJECT**

LCA / LCT	% of LCA/LCT highlighted on tip height ZTV 50 km	Distance to Mona Array (km)	Magnitude of Impact	Sensitivity of Receptor	Significance of Effect.
A5 Coastal and Estuarine Flats (Colwyn Bay)	83	33	<b>Negligible</b> – due to distance and the screening afforded by the coastal settlements of Old Colwyn and Rhos-on-Sea.	<b>Medium</b> (distinctive characteristics such as outlook towards the sea at Colwyn Bay from urban edge. Coastal location). The overall evaluation for each LANDMAP visual and sensory area is as follows (sourced from LANDMAP database): <ul style="list-style-type: none"> <li>• CNWVS022 – High</li> <li>• CNWVS023 – Moderate</li> <li>• CNWVS024 – Moderate</li> <li>• CNWVS033 – Moderate</li> <li>• CNWVS036 – Low</li> <li>• CNWVS052 – High</li> <li>• CNWVS053 – Low</li> <li>• CNWVS056 – Moderate</li> <li>• CNWVS060 – Low</li> <li>• CNWVS068 – High</li> <li>• CNWVS073 - High</li> </ul> Medium value - an undesignated coastal landscape.	<b>Negligible to Minor adverse</b> not significant
A6 Vale Farmlands (Vale of Clwyd)	43	39	<b>Negligible</b> – due to the distance to the Mona Array Area and the inland character with no relationship to the coast.	<b>Medium</b> (a farmed landscape with some distinctive features such as wooded landcover and of less susceptibility to offshore wind turbines. Located inland from the coast).	<b>Negligible to Minor adverse</b> not significant



**MONA OFFSHORE WIND PROJECT**

LCA / LCT	% of LCA/LCT highlighted on tip height ZTV 50 km	Distance to Mona Array (km)	Magnitude of Impact	Sensitivity of Receptor	Significance of Effect.
				<p>The overall evaluation for each LANDMAP visual and sensory area is as follows (sourced from LANDMAP database):</p> <ul style="list-style-type: none"> <li>• DNBGHVS004 – Low</li> <li>• DNBGHVS005 – High</li> <li>• DNBGHVS007 – Moderate</li> <li>• DNBGHVS009 – Moderate</li> <li>• DNBGHVS011 – High</li> <li>• DNBGHVS012 – High</li> <li>• DNBGHVS013 – Moderate</li> <li>• DNBGHVS014 – Moderate</li> <li>• DNBGHVS015 – High</li> <li>• DNBGHVS016 – High</li> <li>• DNBGHVS026 – Low</li> <li>• DNBGHVS030 – Moderate</li> <li>• DNBGHVS031 – High</li> <li>• DNBGHVS033 – Moderate</li> <li>• DNBGHVS034 – Moderate</li> <li>• DNBGHVS035 – High</li> <li>• DNBGHVS036 – Moderate</li> <li>• DNBGHVS037 – High</li> <li>• DNBGHVS039 – Moderate</li> <li>• CNWVS020 – High</li> <li>• CNWVS024 – Moderate</li> </ul>	

MONA OFFSHORE WIND PROJECT

LCA / LCT	% of LCA/LCT highlighted on tip height ZTV 50 km	Distance to Mona Array (km)	Magnitude of Impact	Sensitivity of Receptor	Significance of Effect.
				<ul style="list-style-type: none"> <li>• CNWVS053 – Low</li> <li>• CNWVS070 - Moderate</li> </ul> <p>Medium value - an undesignated landscape with some detractors such as overhead powerlines and busy roads and built-up areas such as St Asaph.</p>	
A8 Coastal Landscape Unit (Penmaenmawr to Llanfairfechan)	81	38	<p><b>Negligible</b> – due to distance and the screening afforded by built up areas at Llanfairfechan and Penmaenmawr.</p>	<p><b>Medium</b> (distinctive characteristics such as outlook towards the sea at Conwy Bay from hilly hinterland. Coastal location).</p> <p>The overall evaluation for each LANDMAP visual and sensory area is as follows (sourced from LANDMAP database):</p> <ul style="list-style-type: none"> <li>• GWNDDVS004 – Moderate</li> <li>• SNPVS072 – High</li> <li>• SNPVS073 – High</li> <li>• SNPVS074 – Moderate</li> <li>• SNPVS075 – Low</li> <li>• SNPVS131 - High</li> </ul> <p>Medium value - an undesignated coastal landscape.</p>	<p><b>Negligible to Minor adverse</b> not significant</p>
B7 Conwy Valley	25	35	<p><b>Negligible</b> – due to distance and the screening afforded by the coastal landscapes in the foreground including Great Orme's head and built-up area of Llandudno</p>	<p><b>Medium</b> (distinctive valley landscape. Located inland from the coast).</p> <p>The overall evaluation for each LANDMAP visual and sensory area is as follows (sourced from LANDMAP database):</p> <ul style="list-style-type: none"> <li>• SNPVS074 – Moderate</li> </ul>	<p><b>Negligible to Minor adverse</b> not significant</p>

**MONA OFFSHORE WIND PROJECT**

LCA / LCT	% of LCA/LCT highlighted on tip height ZTV 50 km	Distance to Mona Array (km)	Magnitude of Impact	Sensitivity of Receptor	Significance of Effect.
				<ul style="list-style-type: none"> <li>• SNPVS076 – Moderate</li> <li>• SNPVS077 – Moderate</li> <li>• SNPVS078 – High</li> <li>• CNWVS015 – Outstanding</li> <li>• CNWVS018 – High</li> <li>• CNWVS022 – High</li> <li>• CNWVS030 – High</li> <li>• CNWVS031 – Low</li> <li>• CNWVS039 – Low</li> <li>• CNWVS041 – Moderate</li> <li>• CNWVS051 – High</li> <li>• CNWVS053 – Low</li> <li>• CNWVS054 – Outstanding</li> <li>• CNWVS057 – Outstanding</li> <li>• CNWVS058 – High</li> <li>• CNWVS059 – High</li> <li>• CNWVS064 – High</li> <li>• CNWVS065 – Moderate</li> <li>• CNWVS067 – High</li> <li>• CNWVS073 – High</li> <li>• CNWVS074 - High</li> </ul> <p>High value – most of this landscape is designated as an SLA.</p>	

**MONA OFFSHORE WIND PROJECT**

LCA / LCT	% of LCA/LCT highlighted on tip height ZTV 50 km	Distance to Mona Array (km)	Magnitude of Impact	Sensitivity of Receptor	Significance of Effect.
C1 Trelawnyd Plateau	44	41	<b>Negligible</b> – due to distance and the limited extent of the effects according to the ZTV. These effects will be further limited due to screening afforded by areas of woodland at Coed Cum.	<b>Medium to High</b> (upland hill farmland located inland from the coast. Few detractors). The overall evaluation for each LANDMAP visual and sensory area is as follows (sourced from LANDMAP database): <ul style="list-style-type: none"> <li>• FLNTVS008 – Moderate</li> <li>• FLNTVS016 – High</li> <li>• DNBGHVS004 – Low</li> <li>• DNBGHVS018 – Outstanding</li> <li>• DNBGHVS021 – Moderate</li> <li>• DNBGHVS024 – Moderate</li> <li>• DNBGHVS026 – Low</li> <li>• DNBGHVS027 – Moderate</li> <li>• DNBGHVS028 - Outstanding</li> </ul> Medium to High value - western part within nationally designated landscape (CRDV NL).	<b>Minor adverse</b> not significant
C4 Limestone Farmlands (Abergele to Denbigh Coastal/ Vale Hills)	57	36	<b>Negligible</b> – due to distance and the screening afforded by extensive areas of woodland.	<b>Medium</b> (distinctive landscape features. Small built-up part of this landscape is located along the coast. Few detractors, e.g. busy road, quarry). The overall evaluation for each LANDMAP visual and sensory area is as follows (sourced from LANDMAP database):	<b>Negligible to Minor adverse</b> not significant

**MONA OFFSHORE WIND PROJECT**

LCA / LCT	% of LCA/LCT highlighted on tip height ZTV 50 km	Distance to Mona Array (km)	Magnitude of Impact	Sensitivity of Receptor	Significance of Effect.
				<ul style="list-style-type: none"> <li>• DNBGHVS026 – Low</li> <li>• DNBGHVS031 – High</li> <li>• DNBGHVS033 – Moderate</li> <li>• DNBGHVS034 – Moderate</li> <li>• DNBGHVS035 – High</li> <li>• DNBGHVS036 – Moderate</li> <li>• DNBGHVS037 – High</li> <li>• DNBGHVS038 – High</li> <li>• DNBGHVS039 – Moderate</li> <li>• CNWVS020 – High</li> <li>• CNWVS021 – High</li> <li>• CNWVS023 – Moderate</li> <li>• CNWVS024 – Moderate</li> <li>• CNWVS033 – Moderate</li> <li>• CNWVS035 – Low</li> <li>• CNWVS052 – High</li> <li>• CNWVS053 – Low</li> <li>• CNWVS060 – Low</li> <li>• CNWVS061 – Low</li> <li>• CNWVS062 – Low</li> <li>• CNWVS069 – High</li> <li>• CNWVS070 - Moderate</li> </ul> <p>Medium value - a large part of this landscape is designated as an SLA.</p>	



**MONA OFFSHORE WIND PROJECT**

LCA / LCT	% of LCA/LCT highlighted on tip height ZTV 50 km	Distance to Mona Array Area (km)	Magnitude of Impact	Sensitivity of Receptor	Significance of Effect.
C5 Limestone Farmlands (Northern Clwydian Range)	53	44	<p><b>Negligible</b> – due to distance and the limited influence of the Mona Array Area due to the inland location. These effects illustrated in the ZTV will be further limited due to screening afforded by areas of woodland.</p>	<p><b>Medium to High</b> (upland hill farmland with distinctive scarp slope and limited detractors apart from busy road and overhead powerline. Located inland from the coast).</p> <p>The overall evaluation for each LANDMAP visual and sensory area is as follows (sourced from LANDMAP database):</p> <ul style="list-style-type: none"> <li>• DNBGHVS016 – High</li> <li>• DNBGHVS024 – Moderate</li> <li>• DNBGHVS026 – Low</li> <li>• DNBGHVS028 – Outstanding</li> <li>• DNBGHVS031 - High</li> </ul> <p>Medium to high value - most of it within nationally designated landscape (CRDV NL).</p>	<p><b>Negligible to Minor adverse</b> not significant</p>

**MONA OFFSHORE WIND PROJECT**

LCA / LCT	% of LCA/LCT highlighted on tip height ZTV 50 km	Distance to Mona Array (km)	Magnitude of Impact	Sensitivity of Receptor	Significance of Effect.
C8 Limestone Escarpment and Hills (Prestatyn - Dyserth Hillside)	94	42	<b>Negligible</b> – due to distance and the screening afforded by built-up areas.	<p><b>Medium to High</b> (distinctive escarpment although mostly comprised of built-up area of Dyserth located inland from the coast).            The overall evaluation for each LANDMAP visual and sensory area is as follows (sourced from LANDMAP database):</p> <ul style="list-style-type: none"> <li>• DNBGHVS004 – Low</li> <li>• DNBGHVS009 – Moderate</li> <li>• DNBGHVS011 – High</li> <li>• DNBGHVS016 – High</li> <li>• DNBGHVS018 – Outstanding</li> <li>• DNBGHVS024 - Moderate</li> </ul> <p>Medium to high value - partially within nationally designated landscape (CRDV NL).</p>	<b>Negligible to Minor adverse</b> not significant

MONA OFFSHORE WIND PROJECT

LCA / LCT	% of LCA/LCT highlighted on tip height ZTV 50 km	Distance to Mona Array (km)	Magnitude of Impact	Sensitivity of Receptor	Significance of Effect.
C9 Limestone Escarpment and Hills	70	34	<b>Negligible</b> – due to distance and the screening afforded by wooded vegetation nearer the coast.	<p><b>Medium</b> (some distinctive characteristics. No obvious detractors. Located inland from the coast).</p> <p>The overall evaluation for each LANDMAP visual and sensory area is as follows (sourced from LANDMAP database):</p> <ul style="list-style-type: none"> <li>• CNWVS021 – High</li> <li>• CNWVS022 – High</li> <li>• CNWVS023 – Moderate</li> <li>• CNWVS024 – Moderate</li> <li>• CNWVS033 – Moderate</li> <li>• CNWVS053 – Low</li> <li>• CNWVS060 – Low</li> <li>• CNWVS070 - Moderate</li> </ul> <p>Medium value - within a designated SLA.</p>	<b>Negligible to Minor adverse</b> not significant
C10 Great Orme and Creuddyn Peninsular	39	30	<b>Small</b> – due to distance and the screening afforded by built up areas including Llandudno. A part of Great Orme’s Head and Little Orme’s Head would be affected according to the ZTV.	<p><b>High</b> (strong distinctive landscape characteristics and absence of notable detractors. Coastal location).</p> <p>The overall evaluation for each LANDMAP visual and sensory area is as follows (sourced from LANDMAP database):</p> <ul style="list-style-type: none"> <li>• CNWVS022 – High</li> <li>• CNWVS024 – Moderate</li> <li>• CNWVS031 – Low</li> </ul>	<b>Minor to Moderate adverse</b> not significant

**MONA OFFSHORE WIND PROJECT**

LCA / LCT	% of LCA/LCT highlighted on tip height ZTV 50 km	Distance to Mona Array (km)	Magnitude of Impact	Sensitivity of Receptor	Significance of Effect.
				<ul style="list-style-type: none"> <li>• CNWVS032 – High</li> <li>• CNWVS036 – Low</li> <li>• CNWVS051 – High</li> <li>• CNWVS052 – High</li> <li>• CNWVS053 – Low</li> <li>• CNWVS054 – Outstanding</li> <li>• CNWVS055 – Moderate</li> <li>• CNWVS056 – Moderate</li> <li>• CNWVS063 – High</li> <li>• CNWVS064 – High</li> <li>• CNWVS065 – Moderate</li> <li>• CNWVS073 – High</li> <li>• CNWVS074 - High</li> </ul> <p>Medium to high value – about half the area is a designated SLA including Great Orme's and Little Orme's Head. The essential setting of Conwy Castle WHS is located within.</p>	
D1 Aled Hiraethog Hills (West)	22	35	<b>Negligible</b> – due to distance and the relatively limited extent of the effects according to the ZTV.	<b>Medium</b> (some distinctive characteristics. No obvious detractors. Located inland from the coast).  The overall evaluation for each LANDMAP visual and sensory area is as follows (sourced from LANDMAP database): <ul style="list-style-type: none"> <li>• DNBGHVS037 – High</li> <li>• DNBGHVS038 – High</li> </ul>	<b>Negligible to Minor adverse</b> not significant

**MONA OFFSHORE WIND PROJECT**

LCA / LCT	% of LCA/LCT highlighted on tip height ZTV 50 km	Distance to Mona Array (km)	Magnitude of Impact	Sensitivity of Receptor	Significance of Effect.
				<ul style="list-style-type: none"> <li>• CNWVS008 – High</li> <li>• CNWVS009 – Moderate</li> <li>• CNWVS010 – Moderate</li> <li>• CNWVS011 – Moderate</li> <li>• CNWVS012 – Moderate</li> <li>• CNWVS017 – High</li> <li>• CNWVS019 – Moderate</li> <li>• CNWVS020 – High</li> <li>• CNWVS023 – Moderate</li> <li>• CNWVS024 – Moderate</li> <li>• CNWVS033 – Moderate</li> <li>• CNWVS042 – Moderate</li> <li>• CNWVS043 – Low</li> <li>• CNWVS053 – Low</li> <li>• CNWVS066 – High</li> <li>• CNWVS068 – High</li> <li>• CNWVS069 – High</li> <li>• CNWVS073 – High</li> <li>• CNWVS074 – High</li> <li>• CNWVS075 – High</li> <li>• CNWVS076 - Moderate</li> </ul> <p>Medium to high value – part of this area is a designated SLA.</p>	



MONA OFFSHORE WIND PROJECT

LCA / LCT	% of LCA/LCT highlighted on tip height ZTV 50 km	Distance to Mona Array (km)	Magnitude of Impact	Sensitivity of Receptor	Significance of Effect.
D8 Upland Plateau	26	39	<p><b>Negligible</b> – due to distance and the relatively limited extent of the effects according to the ZTV.</p>	<p><b>Medium</b> (some distinctive characteristics. No obvious detractors apart from overhead powerlines. Located inland from the coast).</p> <p>The overall evaluation for each LANDMAP visual and sensory area is as follows (sourced from LANDMAP database):</p> <ul style="list-style-type: none"> <li>• CNWVS009 - Moderate</li> <li>• CNWVS066 - High</li> <li>• CNWVS068 - High</li> <li>• CNWVS073 - High</li> <li>• CNWVS076 - Moderate</li> </ul> <p>Medium to high value – a very small area lies within a designated SLA.</p>	<p><b>Negligible to Minor adverse</b> not significant</p>

**MONA OFFSHORE WIND PROJECT**

LCA / LCT	% of LCA/LCT highlighted on tip height ZTV 50 km	Distance to Mona Array (km)	Magnitude of Impact	Sensitivity of Receptor	Significance of Effect.
D16 Marginal Upland (East Conwy Valley)	45	40	<p><b>Negligible</b> – due to distance and the relatively limited extent of the effects according to the ZTV and having regard for the screening afforded by woodland.</p>	<p><b>Medium</b> (some distinctive characteristics. No obvious detractors. Located inland from the coast).</p> <p>The overall evaluation for each LANDMAP visual and sensory area is as follows (sourced from LANDMAP database):</p> <ul style="list-style-type: none"> <li>• CNWVS011 – Moderate</li> <li>• CNWVS012 - Moderate</li> <li>• CNWVS067 - High</li> <li>• CNWVS073 - High</li> <li>• CNWVS076 - Moderate</li> </ul> <p>Medium to high value – about half the area is a designated SLA.</p>	<p><b>Negligible to Minor adverse</b> not significant</p>

**MONA OFFSHORE WIND PROJECT**
**Table 1.11: Assessment of effects on Anglesey SCAs resulting from the Mona Array Area.**

SCT	% of SCT highlighted on tip height ZTV 60 km	Distance to Mona Array Area (km)	Magnitude of Impact	Sensitivity of Receptor	Significance of Effect.
SCA 2 Conwy Bay This SCA partly overlaps with LCTs A8 Coastal Landscape Unit (Penmaenmawr to Llanfairfechan), B7 Conwy Valley C10 Great Orme and Creuddyn Peninsular LCA 1 Northern Uplands of Eryri NP	80	30	<b>Negligible to small</b> – The majority of this SCA is highlighted in the ZTV. However, at 30 km distance, the scale of the Mona wind turbines apparent from this SCA would be limited.	<b>High</b> (distinctive coastal landscape with distinctive mountain backdrop of Eryri. Shallow bay ringed by high hills including Conwy Mountain and Limestone Headland of Great Orme's Head to the east. Development in the form of settlements, golf courses, caravan parks and recreational boating facilities along with A55 road and railway corridors confer a busy feel to the Conwy Estuary).  The overall evaluation for each LANDMAP visual and sensory that the SCA overlaps with is as follows (sourced from LANDMAP database): <ul style="list-style-type: none"> <li>• SNPVS072 – High</li> <li>• SNPVS073 – High</li> <li>• SNPVS074 – Moderate</li> <li>• SNPVS075 – Low</li> <li>• SNPVS076 – Moderate</li> <li>• SNPVS077 – Moderate</li> <li>• SNPVS078 – High</li> <li>• CNWVS018 – High</li> <li>• CNWVS022 – High</li> <li>• CNWVS024 – Moderate</li> <li>• CNWVS030 – High</li> <li>• CNWVS031 – Low</li> </ul>	<b>Minor to moderate adverse not significant</b>

**MONA OFFSHORE WIND PROJECT**

SCT	% of SCT highlighted on tip height ZTV 60 km	Distance to Mona Array Area (km)	Magnitude of Impact	Sensitivity of Receptor	Significance of Effect.
				<ul style="list-style-type: none"> <li>• CNWVS032 – High</li> <li>• CNWVS051 – High</li> <li>• CNWVS053 – Low</li> <li>• CNWVS054 – Outstanding</li> <li>• CNWVS058 – High</li> <li>• CNWVS063 – High</li> <li>• CNWVS065 – Moderate</li> <li>• CNWVS067 – High</li> <li>• SNPVS131 - High</li> </ul> <p>High value – partly located within Eryri NP (LCA 1 Northern Uplands). The coast at Great Orme’s Head is a designated SLA.</p>	
<p>SCA 3 Traeth Lafan</p> <p>This SCA partly overlaps with LCTs A8 Coastal Landscape Unit (Penmaenmawr to Llanfairfechan)</p> <p>1 Bangor Coastal Plain</p> <p>LCA 5 North West Anglesey in Isle of Anglesey NP</p> <p>LCA 11 Eastern Menai Strait in Isle of Anglesey NL</p>	83	33	<p><b>Negligible to small</b> – The majority of this SCA is highlighted in the ZTV. However, at 33 km distance, the scale of the Mona wind turbines apparent from this SCA would be limited.</p>	<p><b>High</b> (a distinctive seascape with mountain backdrop of Eryri as magnificent setting. Seaward views focussed on Traeth Lafan and Conwy Bay and framed by Puffin Island and Great Orme’s Head. Development in the form of settlements and the A55 Road south of Lafan Sands. Land and water based recreational uses influence the character of parts of the SCA).</p> <p>The overall evaluation for each LANDMAP visual and sensory that the SCA overlaps with is as follows (sourced from LANDMAP database):</p> <ul style="list-style-type: none"> <li>• GWNDDVS001 - High</li> </ul>	<p><b>Minor to moderate adverse</b> not significant</p>

**MONA OFFSHORE WIND PROJECT**

SCT	% of SCT highlighted on tip height ZTV 60 km	Distance to Mona Array Area (km)	Magnitude of Impact	Sensitivity of Receptor	Significance of Effect.
				<ul style="list-style-type: none"> <li>• GWNDDVS002 - Moderate</li> <li>• GWNDDVS003 - High</li> <li>• GWNDDVS004 - Moderate</li> <li>• GWNDDVS008 - Moderate</li> <li>• SNPVS073 - High</li> <li>• SNPVS074 - Moderate</li> <li>• YNSMNVS015 - High</li> <li>• YNSMNVS016 - Moderate</li> <li>• YNSMNVS025 - High</li> <li>• YNSMNVS040 - High</li> <li>• YNSMNVS042 - High</li> <li>• YNSMNVS043 - Outstanding</li> <li>• YNSMNVS063 - Outstanding</li> <li>• YNSMNVS076 - Moderate</li> <li>• YNSMNVS093 - High</li> <li>• SNPVS131 - High</li> </ul> <p>High value – estuary located between the coast of Isle of Anglesey NL and Eryri NP.</p>	
SCA 4 Menai Strait	16	42	<b>Negligible</b> – A limited extent of the SCA will be theoretically affected. At 42 km distance, the scale of the Mona wind turbines apparent from this SCA would be limited.	<b>High</b> (distinctive narrow tidal channel. Woodland and country estates line the banks of the strait. Menai road and rail bridges are significant built features. Wider seascape setting is limited in the southern part of the SCA. Views towards Conwy Bay north of Telford Bridge.	<b>Minor to moderate adverse</b> not significant



**MONA OFFSHORE WIND PROJECT**

SCT	% of SCT highlighted on tip height ZTV 60 km	Distance to Mona Array Area (km)	Magnitude of Impact	Sensitivity of Receptor	Significance of Effect.
				<p>Infrastructure in the form of roads and bridges result in reduced tranquillity).</p> <p>The overall evaluation for each LANDMAP visual and sensory that the SCA overlaps with is as follows (sourced from LANDMAP database):</p> <ul style="list-style-type: none"> <li>• GWNDDVS001 – High</li> <li>• GWNDDVS002 – Moderate</li> <li>• GWNDDVS003 – High</li> <li>• GWNDDVS004 – Moderate</li> <li>• GWNDDVS005 – High</li> <li>• GWNDDVS006 – Moderate</li> <li>• GWNDDVS086 – Moderate</li> <li>• YNSMNVS017 – Moderate</li> <li>• YNSMNVS018 – Moderate</li> <li>• YNSMNVS024 – High</li> <li>• YNSMNVS026 – High</li> <li>• YNSMNVS043 – Outstanding</li> <li>• YNSMNVS044 – Outstanding</li> <li>• YNSMNVS061 – High</li> <li>• YNSMNVS062 – Low</li> <li>• YNSMNVS077 – Low</li> <li>• YNSMNVS091 – Low</li> <li>• YNSMNVS093 - High</li> </ul>	

**MONA OFFSHORE WIND PROJECT**

SCT	% of SCT highlighted on tip height ZTV 60 km	Distance to Mona Array Area (km)	Magnitude of Impact	Sensitivity of Receptor	Significance of Effect.
				Medium to high value – Part of this SCA is located within the Isle of Anglesey NL Part of this SCA is a designated SLA.	
SCA 5 Penmon This SCA lies within LCA 10 Penmon and Puffin Island within Isle of Anglesey NL.	94	33	<b>Small</b> – The majority of this SCA will be theoretically affected as highlighted in the ZTV. In reality, the effects will be less than that indicated due to the screening afforded by vegetation and built structures (small settlements). At 33 km distance, the scale of the Mona wind turbines apparent from this SCA would be limited.	<b>High</b> (coastal landscape with strong distinctive features and a sense of remoteness and wildness. Puffin Island and Great Orme's Head are focal points in views out to sea. Remnants of past limestone quarrying present in the landscape. Views out to sea feature large ships waiting for pilot boats to dock in Liverpool Port).  The overall evaluation for each LANDMAP visual and sensory that the SCA overlaps with is as follows (sourced from LANDMAP database): <ul style="list-style-type: none"> <li>• YNSMNV005 – High</li> <li>• YNSMNV015 – High</li> <li>• YNSMNV016 – Moderate</li> <li>• YNSMNV017 – Moderate</li> <li>• YNSMNV039 – Outstanding</li> <li>• YNSMNV040 – High</li> <li>• YNSMNV041 - Outstanding</li> </ul> High value - a large part of the SCA is located within Isle of Anglesey NL.	<b>Minor to moderate adverse not significant.</b>
SCA 6 Red Wharf Bay to Moelfre	97	28	<b>Small</b> - The majority of this SCA will be theoretically affected as highlighted in the ZTV. In reality,	<b>High</b> (distinctive seascape character dominated by Red Wharf Bay which is large in scale and for which headlands at	<b>Minor to Moderate</b>

MONA OFFSHORE WIND PROJECT

SCT	% of SCT highlighted on tip height ZTV 60 km	Distance to Mona Array Area (km)	Magnitude of Impact	Sensitivity of Receptor	Significance of Effect.
This SCA partly overlaps with LCA 9 Red Wharf Bay within Isle of Anglesey NL.			the effects on the landward component will be less than that indicated due to the screening afforded by vegetation, and built structures. At 28 km distance, the scale of the Mona wind turbines apparent from this SCA would be limited.	<p>each end frame views out to sea. Tourist developments in the form of caravan parks, car parks and campsites are prominent in views. Views out to sea feature large ships waiting for pilot boats to dock in Liverpool Port).</p> <p>The overall evaluation for each LANDMAP visual and sensory that the SCA overlaps with is as follows (sourced from LANDMAP database):</p> <ul style="list-style-type: none"> <li>• YNSMNVS005 – High</li> <li>• YNSMNVS006 – High</li> <li>• YNSMNVS012 – Moderate</li> <li>• YNSMNVS014 – Moderate</li> <li>• YNSMNVS015 – High</li> <li>• YNSMNVS017 – Moderate</li> <li>• YNSMNVS022 – Moderate</li> <li>• YNSMNVS037 – High</li> <li>• YNSMNVS039 – Outstanding</li> <li>• YNSMNVS040 – High</li> <li>• YNSMNVS073 – Moderate</li> <li>• YNSMNVS074 – Low</li> <li>• YNSMNVS075 – Moderate</li> <li>• YNSMNVS095 - High</li> </ul> <p>Medium to high value – part of the SCA is located within Isle of Anglesey NL.</p>	<b>adverse</b> not significant

**MONA OFFSHORE WIND PROJECT**

SCT	% of SCT highlighted on tip height ZTV 60 km	Distance to Mona Array Area (km)	Magnitude of Impact	Sensitivity of Receptor	Significance of Effect.
<p>SCA 7 Dulas Bay</p> <p>This SCA partly overlaps with LCA 6 Amlwch and Environs and LCA 8 Dulas Bay Hinterland within Isle of Anglesey NL.</p>	88	28	<p><b>Small</b> - The majority of this SCA will be theoretically affected as highlighted in the ZTV. In reality, the effects on the landward component will be less than that indicated due to the screening afforded by vegetation, and built structures. At 28 km distance, the scale of the Mona wind turbines apparent from this SCA would be limited.</p>	<p><b>High</b> (distinctive coastline with rocky headlands and beaches at Dulas and Lligwy Bays. The island of Ynys Dulas as a focal point.</p> <p>Seascape setting dominated by this island and large ships out at sea waiting to dock in Liverpool Port. The SCA is a busy holiday destination with many caravan parks in the southern part of the SCA). The overall evaluation for each LANDMAP visual and sensory that the SCA overlaps with is as follows (sourced from LANDMAP database):</p> <ul style="list-style-type: none"> <li>• YNSMNV003 – Moderate</li> <li>• YNSMNV010 – Moderate</li> <li>• YNSMNV011 – High</li> <li>• YNSMNV012 – Moderate</li> <li>• YNSMNV014 – Moderate</li> <li>• YNSMNV037 – High</li> <li>• YNSMNV038 – Outstanding</li> <li>• YNSMNV073 - Moderate</li> </ul> <p>Medium to high value – part of the SCA is within Isle of Anglesey NL.</p>	<p><b>Minor to Moderate adverse</b> not significant</p>
<p>SCA 8 Amlwch and Cemaes</p> <p>This SCA partly overlaps with LCA 4 North West Coast, LCA 5 North West Anglesey and LCA 6 Amlwch and Environs within Isle of Anglesey NL.</p>	82	28	<p><b>Small</b> - The majority of this SCA will be theoretically affected as highlighted in the ZTV. Small sections of the coastline comprising small coves and beaches will not be affected. In</p>	<p><b>High</b> (distinctive coastal landscape with beaches and rocky headlands at Point Lynas and Wylfa Head. Islands of East Mouse and Middle Mouse are focal points in sea views with Isle of Man further afield. The SCA is overlooked by</p>	<p><b>Minor to Moderate adverse</b> not significant</p>

MONA OFFSHORE WIND PROJECT

SCT	% of SCT highlighted on tip height ZTV 60 km	Distance to Mona Array Area (km)	Magnitude of Impact	Sensitivity of Receptor	Significance of Effect.
			<p>reality, the effects on the landward component will be less than that indicated due to the screening afforded by vegetation and built structures. At 28 km distance, the scale of the Mona wind turbines apparent from this SCA would be limited.</p>	<p>distinctive mountain profiles of Parys Mountain and Mynydd Eilian. The SCA features large scale industrial structure of Wylfa Power Station on the coast along with coastal settlements).</p> <p>The overall evaluation for each LANDMAP visual and sensory that the SCA overlaps with is as follows (sourced from LANDMAP database):</p> <ul style="list-style-type: none"> <li>• YNSMNVS003 – Moderate</li> <li>• YNSMNVS008 – Moderate</li> <li>• YNSMNVS010 – Moderate</li> <li>• YNSMNVS011 – High</li> <li>• YNSMNVS035 – High</li> <li>• YNSMNVS037 – High</li> <li>• YNSMNVS060 – Low</li> <li>• YNSMNVS068 – Moderate</li> <li>• YNSMNVS086 - Low</li> </ul> <p>Medium to high value – part of the SCA is within Isle of Anglesey NL.</p>	

**MONA OFFSHORE WIND PROJECT**

SCT	% of SCT highlighted on tip height ZTV 60 km	Distance to Mona Array Area (km)	Magnitude of Impact	Sensitivity of Receptor	Significance of Effect.
<p>SCA 9 Cemlyn Bay</p> <p>This SCA partly overlaps with LCA 4 North West Coast and LCA 5 North West Anglesey within Isle of Anglesey NL.</p>	<p>91</p>	<p>36</p>	<p><b>Negligible</b> - The majority of this SCA will be theoretically affected as highlighted in the ZTV apart from low lying areas of farmland in between drumlin hills. At 36 km distance, the scale of the Mona wind turbines apparent from this SCA would be limited.</p>	<p><b>High</b> (a distinctive coastal landscape with rocky coastline, deeply incised bays and islands (West Mouse and Harry Furlough's Rocks). A low-lying coast comprised of drumlin farmland. Wylfa Power Station is a dominant element in the eastern part of the SCA. Outlook from this seascape is north westerly and, to some extent, away from Mona Array Area).</p> <p>The overall evaluation for each LANDMAP visual and sensory that the SCA overlaps with is as follows (sourced from LANDMAP database):</p> <ul style="list-style-type: none"> <li>• YNSMNVS002 – High</li> <li>• YNSMNVS008 – Moderate</li> <li>• YNSMNVS034 – High</li> <li>• YNSMNVS035 – High</li> <li>• YNSMNVS036 – Outstanding</li> <li>• YNSMNVS086 - Low</li> </ul> <p>High value – part of the SCA is within Isle of Anglesey NL.</p>	<p><b>Negligible to minor adverse</b> not significant.</p>



**MONA OFFSHORE WIND PROJECT**

SCT	% of SCT highlighted on tip height ZTV 60 km	Distance to Mona Array Area (km)	Magnitude of Impact	Sensitivity of Receptor	Significance of Effect.
<p>SCA 10 Carmel Head to Penrhyn This SCA partly overlaps with LCA 4 North West Coast and LCA 5 North West Anglesey within Isle of Anglesey NL.</p>	37	41	<p><b>Negligible</b> – The ZTV indicated theoretical effects on the seaward component of this SCA and at some distance to the coastline. The coastal landscape will be unaffected apart from Carmel Head. At 41 km distance, the scale of the Mona wind turbines apparent from this SCA would be limited.</p>	<p><b>High</b> (distinctive coastal landscape with cliffs, beaches and Carmel Head which is the turning point or transition between the north coast and the west coast. As a result, the outlook from most of this seascape is north westerly and away from Mona. Islands of West Mouse and The Skerries are focal points. Ferries are visible at sea).</p> <p>The overall evaluation for each LANDMAP visual and sensory that the SCA overlaps with is as follows (sourced from LANDMAP database):</p> <ul style="list-style-type: none"> <li>• YNSMNV002 – High</li> <li>• YNSMNV008 – Moderate</li> <li>• YNSMNV034 – High</li> <li>• YNSMNV035 - High</li> </ul> <p>High value – part of the SCA is within Isle of Anglesey NL.</p>	<p><b>Negligible to minor adverse</b> not significant.</p>

**MONA OFFSHORE WIND PROJECT**

SCT	% of SCT highlighted on tip height ZTV 60 km	Distance to Mona Array Area (km)	Magnitude of Impact	Sensitivity of Receptor	Significance of Effect.
SCA 28 North-east of Anglesey	100	7	<p><b>Small to medium</b> – The Mona Array Area is not situated within this SCA. However, as an area of open sea, the whole SCA would be affected according to the ZTV however the scale of the effects would diminish with increasing distance from the Mona Array Area varying from 7km at the closest point to 33 km at the furthest point as noted in the description of SCA 28 (Fiona Fyfe Associates, 2013).</p>	<p><b>Medium</b> (some distinctive characteristics in the southern part of this SCA due to the presence and visibility of the coastline. Further north, the coast is barely visible and character is dominated by the sea and commercial shipping. The SCA is used for commercial fishing).</p> <p>This SCA does not overlap with any area of land.</p> <p>Medium value – an extensive undesignated offshore SCA, a small part of which lies close to Point Lynas on Isle of Anglesey NL. The northerly part of the SCA is influenced by the mountains in Eryri NP. The Isle of Anglesey NL is difficult to see from the northern part of the SCA.</p>	<p><b>Minor to Moderate adverse</b> not significant</p>

**MONA OFFSHORE WIND PROJECT**

SCT	% of SCT highlighted on tip height ZTV 60 km	Distance to Mona Array Area (km)	Magnitude of Impact	Sensitivity of Receptor	Significance of Effect.
SCA 29 North of Anglesey	100	20	<p><b>Negligible to Small</b> – The Mona Array Area is not situated within this SCA. However, as an area of open sea, the whole SCA would be affected according to the ZTV however the scale of the effects would diminish with increasing distance from the Mona Array Area varying from 20 km at the closest point to 46 km at the furthest point as noted in the description of SCA 28 (Fiona Fyfe Associates, 2013).</p>	<p><b>Medium</b> (the Isle of Anglesey coastline is visible close to the coast but recedes from view with increasing distance out to sea. The SCA is used for commercial and recreational fishing. Commercial shipping also features in the SCA.</p> <p>This SCA does not overlap with any area of land.</p> <p>Medium value – an extensive undesignated offshore SCA, part of which lies close to the coast of the Isle of Anglesey NL. The Isle of Anglesey NL disappears from view with increasing distance out to sea.</p>	<p><b>Minor adverse</b> not significant</p>
SCA 30 North-west of Anglesey	100	39	<p><b>Negligible</b> – due to the distance to the Mona Array Area.</p> <p>The Mona Array Area is not situated within this SCA. However, as an area of open sea, the whole SCA would be affected according to the ZTV, however the scale of the effects would diminish with increasing distance from the Mona Array Area .</p>	<p><b>Low</b> (the SCA is far from the coastline and therefore has a limited relationship to the coast. There are few distinctive characteristics of this offshore area. Shipping and Ferries travel across the southern part of the SCA.</p> <p>This SCA does not overlap with any area of land.</p> <p>Low value - an extensive undesignated offshore SCA located out from the west coast of the Isle of Anglesey NL.</p>	<p><b>Negligible to Minor adverse</b> not significant effect.</p>

## 1.2.3 Summary and conclusions

- 1.2.3.1 The assessment of effects resulting from the Mona Array Area on the landscape and seascape character of Wales was informed by published landscape character assessment data for each of the three nationally designated landscapes, Isle of Anglesey NL, Eryri NP and Clwydian Range and Dee Valley NL along with landscape character data for undesignated landscapes in Gwynedd, Conwy and Denbighshire and published seascape character data for the Isle of Anglesey.
- 1.2.3.2 The assessment approach considered these individual landscape character types, landscape character areas and seascape character areas and concluded no significant effects. This is largely due to the distance to the Mona Array Area along with the extent of visibility having regard for vegetation and built-up areas as visual screens.

## 1.2.4 References

- Clwydian Range and Dee Valley NL (2018) Supplementary Planning Guidance Note.
- Conwy County Borough Council (2014) Supplementary Planning Guidance: LDP11: Landscape Sensitivity and Capacity Assessment for Onshore Wind Turbine Development.
- Cyngor Gwynedd Council (2009) Supplementary Planning Guidance: Landscape Character.
- Department for Business, Energy and Industrial Strategy (DBEIS) (2022) UK Offshore Energy Strategic Environmental Assessment: Future Leasing/Licensing for Offshore Renewable Energy, Offshore Oil & Gas and Gas Storage and Associated Infrastructure: OESEA4 Environmental Report.
- Fiona Fyfe Associates (on behalf of Isle of Anglesey Council) (2013) Anglesey Seascape Character Assessment.
- Gwynedd Council (2009) Supplementary Planning Guidance: Landscape Character.
- Isle of Anglesey County Council (2011) Anglesey Landscape Strategy Update 2011.
- Landscape Institute (published August 2024) Technical Guidance Note LITGN-2024-01: Notes and Clarifications on Aspects of Guidelines for Landscape and Visual Impact Assessment Third edition (GLVIA3).
- Landscape Institute and Institute of Environmental Management and Assessment (2013) Guidelines for Landscape and Visual Impact Assessment: Third edition.
- NRW (2007 onwards) LANDMAP (on-line resource) [Natural Resources Wales / LANDMAP - the Welsh landscape baseline](#)
- NRW (2023) Landscape Sensitivity Assessment guidance for Wales (NRW guidance note report ref no. GN 017).
- Snowdonia National Park Authority (2014) Supplementary Planning Guidance: Landscapes and Seascapes of Eryri.
- White Consultants (2020) Offshore Energy Strategic Environmental Assessment: Review and Update of Seascape and Visual Buffer study for Offshore Wind Farms.